

UltraSentry Help

Table Of Contents

Getting Started.....	1
Menu Summary	13
File Menu	13
View Menu.....	16
Profiles Menu	19
Help Menu.....	20
Wizard Options	23
Configuration	39
Sales and Support.....	51
License Agreement.....	53
Index.....	55

Getting Started

Getting Started



When UltraSentry is initially launched the user-friendly Wizard will be displayed. Should you wish to hide the Wizard on startup, you should click the Configure icon on the toolbar, select the Profiles tab in the Configuration dialog, and then deselect "Run wizard at startup" and click OK to save this change. To enable the Wizard, repeat these steps and select this option.

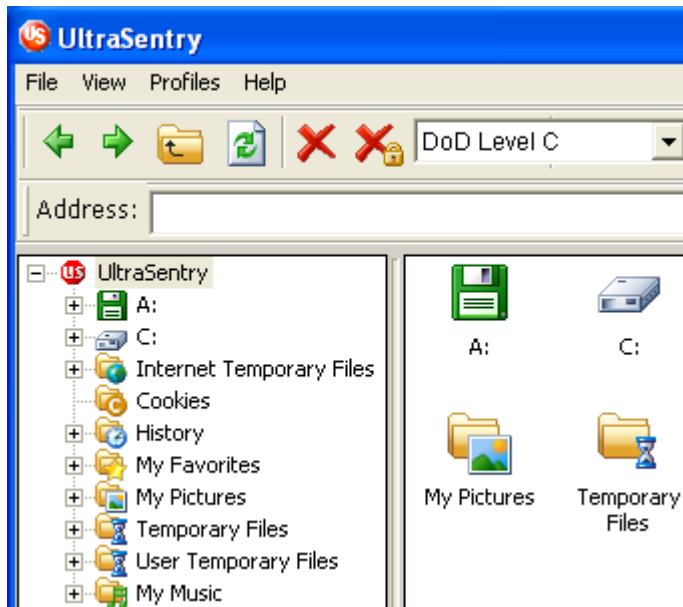


The Wizard may be used to enable users to step through and easily create cleaning profiles which may be saved for later use. Basic and Advanced modes of operation are supported by the Wizard.

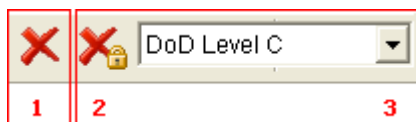
If users prefer not to use the Wizard there are primarily two modes of operation in UltraSentry - immediate actions and repeatable actions.

Immediate Actions

Users may select files and/or folders in the Explorer interface



and delete these items with the appropriate toolbar button.



To delete a file or folder simply browse to it, select it, and click the (1) Delete button or the (2) Secure Delete button. The (3) Security Level dropdown may be used to select the security level to be used when a secure delete is executed.

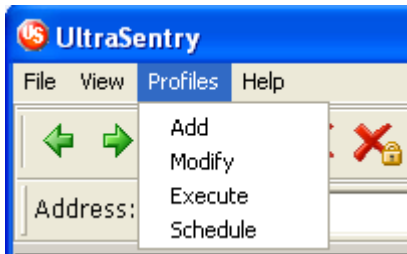
Some items in the toolbar don't require a selection, but execute set tasks with the touch of a button:



Using these buttons you can (1) Clean Cookies, (2) Clean Temporary Internet Files, (3) Clean the Recycle Bin, or (4) Remove Deleted Outlook Mails. All items in the toolbar have tooltips that will appear when the cursor hovers over a button to clarify what action is performed by pressing the button.

Repeatable Actions

To execute a series of operations or to save operations for use in the future or at a specific time, users may use the Add, Modify, Execute or Schedule options in the Profile menu



or invoke the same operations through the appropriate toolbar buttons:



using (1) Run Wizard to define cleaning parameters, (2) Run Profile to execute a previously defined cleaning operation, or (3) Schedule Profile to schedule a cleaning operation to run at a later time or when a specified event occurs.

For more information on defining repeatable cleaning operations please refer to the Wizard documentation.

System Requirements

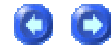


UltraSentry will run on the following Windows Operating Systems:



(Note: IE 4.0 or higher required on NT4)

Using UltraSentry



UltraSentry is designed to allow users to navigate the directory structure on their PC or network and select files and folders for deletion. Normally when a file or folder is deleted it isn't really removed from the hard disk, but the "address" for the item (the FAT/MFT table entry) is removed such that references to the item in the directory structure are no longer shown.

When an application allocates file space or virtual memory it is unable to view data that was previously stored in the resources Windows allocates for it. However, when the operating system (OS) is not active it is possible to use raw disk editors and recovery tools to view and recover data that the OS has deallocated. Even when you encrypt files with Windows 2000's Encrypting File System (EFS), a file's original unencrypted file data is left on the disk after a new encrypted version of the file is created.

The only way to ensure that deleted files, as well as files that you encrypt with EFS, are safe from recovery is to use a secure delete application, such as UltraSentry. UltraSentry overwrites a deleted file's on-disk data using techniques that are shown to make disk data unrecoverable, even using recovery technology that can read patterns in magnetic media that reveal weakly deleted files. UltraSentry empowers the user to securely delete or overwrite files and folders in such a way that they are no longer recoverable, giving you confidence that once deleted with UltraSentry, your file data is gone forever.

Standard methods of deletion are available from within UltraSentry by right clicking on an item and selecting Delete from the context menu or by selecting Delete from the File menu. Secure delete methods allow the user to determine what is used to overwrite sensitive data and the number of times the process should be repeated to render data inaccessible to other users.

Department of Defense Levels C and D secure deletion methods (as defined in the US Department of Defense 5220.22-M Clearing and Sanitization Matrix) are among the default levels of deletion available for use in UltraSentry.

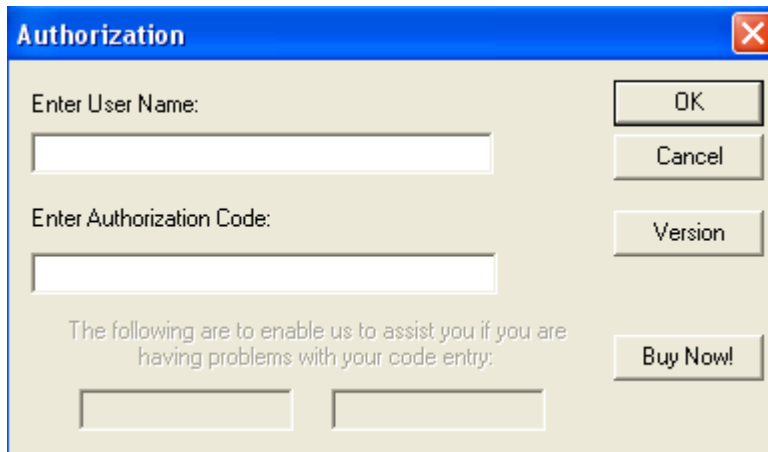
Along with manual deletion operations, UltraSentry allows the user to create Profiles (deletion methods) to be used for defined file/folder types and also to schedule how often these Profiles should be run automatically once defined.

Registering UltraSentry



The user name and authorization code provided for UltraSentry are case sensitive and must be entered EXACTLY as received from IDM Computer Solutions, Inc.

The EASIEST and MOST RECOMMENDED way to enter the code correctly is to copy it from the message received from IDM using the clipboard (select it and then copy to clipboard), then paste it into the authorization dialog edit box (using Ctrl+V).



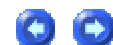
Please note that if your user name includes a reference to the number of users, i.e.,

"Acme Printing~ 8 User License"

this is part of the registration name and must be entered along with "Acme Printing".

If you do have any problems properly registering UltraSentry, please send an email to support@idmcomp.com indicating what version of UltraSentry you're trying to register and EXACTLY what you're entering for the user name and authorization code. We will reply to you as soon as possible with information to help you register your license.

Clearing and Sanitization Matrix



The secure delete option in UltraSentry is designed to meet the standards specified in DoD 5220.22-M / NISPOM 8-306 as indicated in the table below.

The US Department of Defense in the clearing and sanitizing standard DoD 5220.22-M recommends the approach "Overwrite all addressable locations with a character, its complement, then a random character and verify" (see table with comments) for clearing and sanitizing information on a writable media.

US Department of Defense 5220.22-M Clearing and Sanitization Matrix

MEDIA	CLEAR	SANITIZE
Magnetic Tape		
Type I	a or b	a, b, or m
Type II	a or b	b or m
Type III	a or b	m
Magnetic Disk		
Bernoullis	a, b, or c	m
Floppies	a, b, or c	m
Non-Removable Rigid Disk	c	a, b, d, or m
Removable Rigid Disk	a, b, or c	a, b, d, or m
Optical Disk		
Read Many, Write Many	c	m
Read Only	m, n	
Write Once, Read Many (Worm)	m, n	
Memory		
Dynamic Random Access memory (DRAM)	c or g	c, g, or m
Electronically Alterable PROM (EAPROM)	i	j or m
Electronically Erasable PROM (EEPROM)	i	h or m
Erasable Programmable ROM (EPROM)	k	l then c, or m
Flash EPROM (FEPROM)	i	c then i, or m
Programmable ROM (PROM)	c	m
Magnetic Bubble Memory	c	a, b, c, or m
Magnetic Core Memory	c	a, b, e, or m
Magnetic Plated Wire	c	c and f, or m
Magnetic Resistive Memory	c	m
Nonvolatile RAM (NOVRAM)	c or g	c, g, or m
Read Only Memory (ROM)		m
Static Random Access Memory (SRAM)	c or g	c and f, g, or m
Equipment		
Cathode Ray Tube (CRT)	g	q
Printers		
Impact	g	p then g
Laser	g	o then g

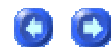
US Department of Defense 5220.22-M Clearing and Sanitization Matrix

a. Degauss with a Type I degausser.

- b. Degauss with a Type II degausser.
- c. Overwrite all addressable locations with a single character.
- d. Overwrite all addressable locations with a character, its complement, then a random character and verify. THIS METHOD IS NOT APPROVED FOR SANITIZING MEDIA THAT CONTAINS TOP SECRET INFORMATION.
- e. Overwrite all addressable locations with a character, its complement, then a random character.
- f. Each overwrite must reside in memory for a period longer than the classified data resided.
- g. Remove all power to include battery power.
- h. Overwrite all locations with a random pattern, all locations with binary zeroes, all locations with binary ones.
- i. Perform a full chip erase as per manufacturer's data sheets.
- j. Perform i above, then c above, a total of three times.
- k. Perform an ultraviolet erase according to manufacturer's recommendation.
- l. Perform k above, but increase by a factor of three.
- m. Destroy - Disintegrate, incinerate, pulverize, shred, or melt.
- n. Destruction required only if classified information is contained.
- o. Run five pages of unclassified text (font test acceptable).
- p. Ribbons must be destroyed. Platens must be cleaned.
- q. Inspect and/or test screen surface for evidence of burned-in information. If present, the cathode ray tube must be destroyed.

For more information regarding clearing and sanitizing security standard DoD 5220.22-M see US Defense Security Police Service Web Site (Chapter 8).

Command Line Options



The following commands may be executed from the command line using UltraSentry:

us -d <filename> [-l <level>] | [-p "profile name" | -c | -t

-d	Deletes file or folder with level found in <level> if specified [-l] key,
----	---

	otherwise with the default level.
-c	Launches the US Configuration Manager shell
-t	Puts the US quick launcher icon onto the system tray
-p	Executes profile with the "profile name" name.

in which case UltraSentry Profile displays the following report:

UltraSentry

Executing Auto-Cleaner profile...

Profile name: <Profile name>

Performing the following operations:

[<task name> ... <status>]

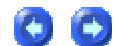
[<task name> ... <status>]

[...]

[Summary: Succeeded - <Number of the successful operations> Failed- <Number of the unsuccessful operations>]

You can abort the profile execution by pressing Ctrl-C. A confirmation of profile execution abort will appear.

Default Profiles



UltraSentry has four profiles that are defined by default when the product is installed: the Log-Off Clean Up profile, the Privacy Guard profile, the Total System Scrub profile, and the Browser Cleanup profile.

Log-Off Clean Up

Secure Log Off Clean Up is a native profile to support the privacy requirements of people who share machines or have multi-user accounts on common desktops. This profile targets USER temporary files and is an automated level of security that will ensure your computing trail remains private. Consider scheduling this profile to run on-event by selecting "Schedule" under the Profiles menu.

By default the Log-Off Clean Up profile does the following:

Cleans Temporary Files

Cleans User Temporary Files

Cleans Scan Disk Temporary Files

Cleans Clipboard Data

Shows Confirmation Dialog

This profile is especially handy as it is an automated level of security that will ensure your computing trail remains private.

Privacy Guard

The Privacy Guard profile will seek out and destroy (erase beyond recovery) the contents of USER folders that monitor and track Internet usage and habits but targets SYSTEM temporary files too. Privacy Guard will also rid your computer of Windows "hidden" files and other data stored without your knowledge such as clipboard data.

By default the Privacy Guard profile does the following:

Cleans Temporary Files

Cleans User Temporary Files

Cleans Recycle Bin

Cleans Scan Disk Temporary Files

Cleans Recent Used Documents List

Cleans Search History

Cleans Common Dialogs History

Cleans Find Computer History

Cleans Network History

Cleans MediaPlayer Recent Files

Cleans Find File History

UltraSentry Help

Cleans Run History

Cleans Start Menu Click History

Cleans Start Menu Order History

Cleans Clipboard Data

Shows Confirmation Dialog

Total System Scrub

The Total System Scrub profile is a comprehensive system cleaning operation. Total System Scrub combines the cleaning operations of Log Off Clean Up and Privacy Guard and goes much deeper. Total System Scrub also cleans the Swap File and Unused Disk Space in order to deep clean your hard drive. Total System Scrub cleaning operations may take an extended period of time depending on your system configuration and available disk space. It is recommended that you close all open programs and run this profile as a scheduled event.

By default the Total System Scrub profile does the following:

Cleans Temporary Files

Cleans User Temporary Files

Cleans Recycle Bin

Cleans Scan Disk Temporary Files

Cleans Recent Used Documents List

Cleans Search History

Cleans Common Dialogs History

Cleans Find Computer History

Cleans Network History

Cleans MediaPlayer Recent Files

Cleans Find File History

Cleans Run History

Cleans Start Menu Click History

Cleans Start Menu Order History

Cleans Windows Swap File

Wipes Free Space C:\ Shell level

Cleans File Slack Space C:\ Shell level

Cleans Clipboard Data

Shows Confirmation Dialog

Browser Cleanup

The **Browser Cleanup** profile securely deletes your browser history, cache, auto-complete data, and unwanted cookies. Temporary Internet Files and Directories are wiped clean which includes system temp files, user temp files, and the recycle bin.

By default the Browser Cleanup profile does the following:

Cleans User Temporary Files

Cleans Clipboard Data

Shows Confirmation Dialog

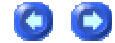
Once you've selected a profile, you can schedule a time for the profile to run or you can select "Run on event" in the Schedule dropdown in the Schedule Profile dialog. Once you've done this you can choose to run the profile either "On Logon", "On Logoff", or "On Restart".

If the profile is already included in the "Existing Scheduler Tasks" list in the Configuration dialog under the Scheduler tab, you can simply click "Edit Task" to activate on event as described above.

Menu Summary

File Menu

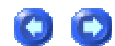
File Menu



The File menu offers the following commands:

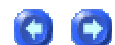
Delete	removes the FAT/MFT table entry for selected item
Secure Delete	overwrites selected item using the security level (deletion method) displayed in the toolbar dropdown.
Secure Delete with Level	overwrites select item using the specified security level
Configure	presents Configuration dialog where user may define Security Levels for Secure Delete or add/modify Profiles which group multiple secure delete processes to be executed as a single process
View / Clear Log	displays activity log from last run profile if option was selected when profile was defined. Users can clear the contents of the log by selecting the view log icon from the file menu or main toolbar icon and click the Clear Log button.
Exit	closes UltraSentry

Delete (File Menu)

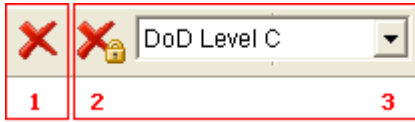


Use this command for a standard delete of the selected file or folder. This is the same as the Windows delete and simply removes the FAT/MFT table entry but does not actually overwrite the selected item. This will move the selected item to the Recycle Bin and it may be securely deleted from here if desired. Please note: Items deleted with this method may be recovered.

Secure Delete (File Menu)



This command overwrites the selected file/folder using the security level (deletion method) indicated in the toolbar dropdown:



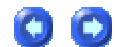
If (1) Delete is selected, a standard Windows delete is executed on the selected item. If (2) Secure Delete is selected from the toolbar or invoked from the File menu then the selected item is deleted using the (3) Security Level selected.

As an example, DoD Level D would automatically execute the following steps:

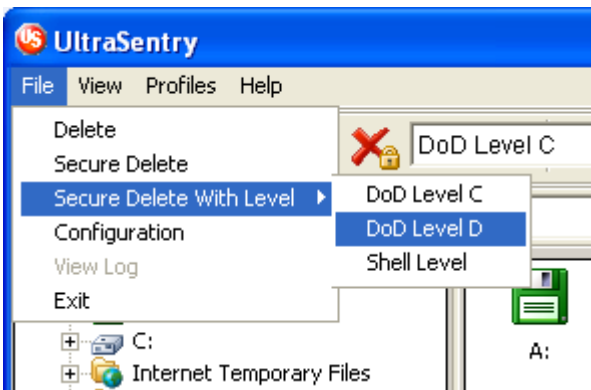
1. Overwrite all addressable locations with a single character (i.e. HEX 00).
2. Overwrite all addressable locations with the complement of the character above (i.e. HEX FF).
3. Overwrite all addressable locations with a random character.
4. Verify all steps above.

This conforms to DoD Level D secure deletion method as defined in DoD 5220.22-M. Please see the Clearing and Sanitization Matrix for more information.

Secure Delete with Level (File Menu)



This command presents a submenu



from which you may select a secure delete level (deletion method) to be used to overwrite the selected file/folder. By default this would include DoD Level C and DoD Level D as defined in the Clearing and Sanitization Matrix from DoD 5220.22-M. By clicking on Configuration in the File menu you may define new security levels (deletion methods) after clicking on the Security tab in the Configuration dialog. Any security levels added by the user would be included in the submenu under this command.

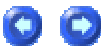
Configuration (File Menu)



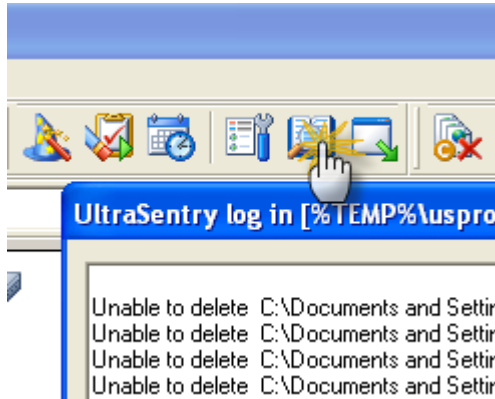
This command presents the Configuration dialog for UltraSentry. The Configuration dialog includes the following configuration sections:

Tab Name	Items Defined Under this Tab
General	Settings for Explorer integration and Security Level options for deletion of items selected in Explorer
Security	Add, modify, or delete Security Levels to be used when deleting items with UltraSentry
Profiles	Add, modify, or delete Profiles which define repeatable cleaning actions
Scheduler	Add, modify, or delete Tasks and schedule when they should occur
Password	Configure UltraSentry to require a password before allowing use
Stealth Mode	Configures UltraSentry to run scheduled operations without launching the UltraSentry application or prompting the user.

View Log (File Menu)



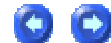
View Log is enabled by default and can be accessed by clicking the View Log icon on the toolbar or by clicking View Log in the File menu.



This command may be used to view the log for the last run profile if the file for the log to be written to was specified when the profile was created. Users can delete the log contents by clicking the Clear Log button when the View Log dialog is active. This path is defined under the Profiles tab in the Configuration dialog.

View Menu

View Menu






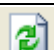


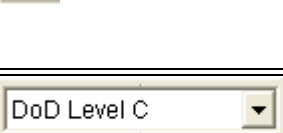




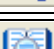





The View menu offers the following commands:

Toolbar	toggles display of the toolbar
Status Bar	toggles display of the status bar
Folder Tree	toggles display of the Folder Tree
Refresh	updates display of current items
Large Icons	sets display format in right pane
Small Icons	sets display format in right pane
List	sets display format in right pane
Details	sets display format in right pane
Arrange icons by	reorders displayed items by name, size, type, or date

Toolbar (View Menu)



The following commands are available in the toolbar:

	Backward	steps backward through previously navigated directories
	Forward	steps forward through previously navigated directories
	Up	moves up one directory from current selection
	Refresh	refreshes selected directory
	Delete Selected File or Folder	removes the FAT/MFT table entry for selected file or folder
	Secure Delete Selected File or Folder	overwrites the selected file/folder using the security level (deletion method) indicated in the toolbar dropdown
	Choose Security Level dropdown	selects deletion method to be used for secure delete
	Run Wizard	launches UltraSentry Wizard
	Run Profile	runs currently selected profile
	Schedule Profile	presents Scheduler pane of Configuration dialog
	Configure	launches Configuration dialog
	View Log	displays cleaning log for active profile
	Stealth Mode	invokes Stealth Mode for UltraSentry
	Clean Cookies	deletes all cookies Warning: This function deletes all cookies from your hard drive. If you want to select certain cookies to keep, please use the Wizard cookie manager.
	Clean Temporary Internet Files	deletes all Temporary Internet Files
	Clean Recycle Bin	empties Recycle Bin
	Remove Deleted Outlook Mails	presents dialog to remove deleted Outlook and Outlook Express mails from system

This command toggles the visibility of the status bar. The status bar displays information regarding the number of objects selected and the size of the objects that are selected.

If a folder is selected in the Folder Tree the status bar will indicate how many objects are in the selected folder and the combined size of the objects contained in that folder.

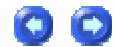
If objects are selected in the main window the status bar will indicate the number of objects selected and the size of the selected objects.

Folder Tree (View Menu)



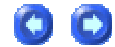
This command toggles the visibility of the Folder Tree.

Refresh (View Menu)



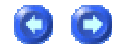
This command refreshes the currently visible items in the Folder Tree and main window.

Large Icons (View Menu)



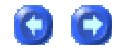
Selecting this item switches the display format for the right pane to list large icons and names only for files and folders.

Small Icons (View Menu)



Selecting this item switches the display format for the right pane to list small icons and names only for files and folders.

List (View Menu)



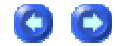
Selecting this item switches the display format for the right pane to a List view for files and folders.

Details (View Menu)



Selecting this item switches the display format for the right pane to list the name, size, type and last modified date for files and folders in the selected folder.

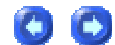
Arrange Icons by (View Menu)



Clicking on this menu item presents a submenu from which you may select one of the following options to sort listed files or folders by: Name, Size, Type, or Date.

Profiles Menu

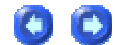
Profiles Menu



The Profiles menu offers the following commands:

Add	invokes the UltraSentry Wizard
Modify	presents Profiles tab of Configuration dialog
Execute	presents Profile Execution dialog
Schedule	presents Scheduler tab of Configuration dialog

Add (Profiles Menu)



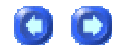
This command presents the UltraSentry Wizard. From here you may begin defining a new cleaning profile.

Modify (Profiles Menu)



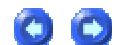
This command presents the Profile tab of the Configuration dialog. From here you may select an existing profile and modify the operations associated with it.

Execute (Profiles Menu)



This command presents the Profile Execution dialog. From here you may select an existing profile to run.

Schedule (Profiles Menu)



This command presents the Profile Scheduler dialog. From here you may select an existing profile and schedule when it should be run.

Help Menu

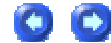
Help Menu



The Help menu offers the following commands:

Index	presents index for Help files
Getting Started	explains basic concepts of using UltraSentry
User Forums/Support	links to online user discussion forum
Check for Updates	checks to see if an upgrade/hotfix is available for the version currently being used
Register UltraSentry	presents dialog for entry of product registration information
Show Startup dialog	toggles if dialog linking to Help files is shown on startup
About UltraSentry	indicates version being run

Index (Help Menu)



Selecting this option causes the index for the Help files to be displayed.

Getting Started (Help Menu)



This command presents basic information which will help the novice begin using UltraSentry. It explains the two primary methods of operation in UltraSentry -- immediate actions and repeatable actions -- and provides guidance on how both can be achieved with UltraSentry.

User Forums/Support (Help Menu)



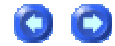
IDM Computer Solutions is happy to host a user forum on our site. This is not intended as a place to report bugs (which should be sent to us at support@idmcomp.com) but is intended as a forum for users to help each other and exchange advise on using and configuring UltraSentry.

Register UltraSentry (Help Menu)



This option presents the Registration dialog where the user name and registration code is entered to register the product. These are obtained by ordering a paid license from IDM Computer Solutions, Inc. or an authorized distributor/reseller. Users who have difficulty registering the product should refer to Registering UltraSentry in the Getting Started section.

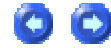
About UltraSentry (Help Menu)



This command presents the About dialog which shows what version is being run and also indicates whether or not the product is currently registered. If the product is registered the name in which the product is registered will be indicated here.

Wizard Options

Wizard



The UltraSentry Wizard allows users to easily define cleaning operations to be executed. These are separated into two major categories: Basic and Advanced.

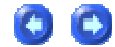


Basic Operations	
Browsers	settings for browsers including autocomplete data, history, cache, and data as well as cookies associated with selected browser are defined here
Temporary Files Cleaning	settings for cookies, temporary files and recycle bin are defined here
User Files	settings for pictures, music, and favorites are defined here
History List Cleaning	history files settings are defined here
Any File	specific files to be removed are defined here

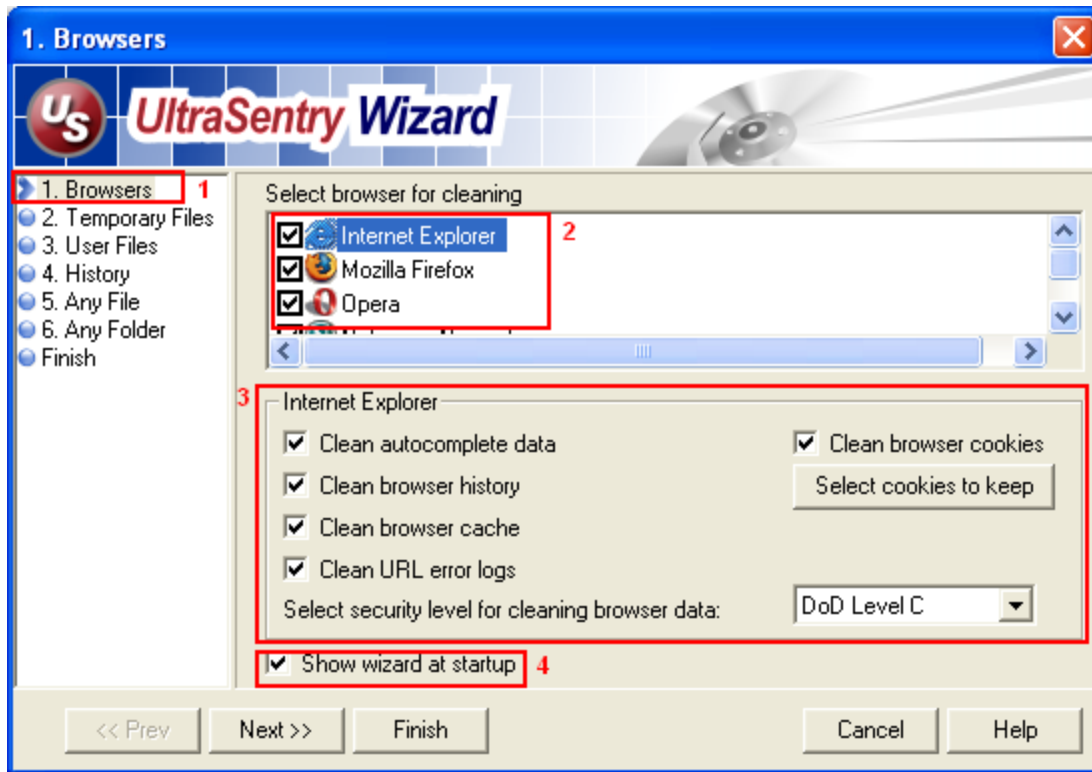
Any Folder	specific folders to be removed are defined here
Advanced Operations	
Registry	registry keys to be removed are defined here
INI Files	INI files/sections to be removed are defined here
Other Operations	settings for swap file, hibernation file, unused disk space, and clipboard data are defined here
Notifications	notifications to occur prior to/upon completion of running profiles defined here
Finish	users may run or save profiles here or schedule a profile to be run later. User may also select whether or not to show Advanced Cleaning Operations in the Wizard here. If this option is not selected, the Finish item will be displayed in the task pane below Any Folder.

When UltraSentry is initially launched the user-friendly Wizard will be displayed. Should you wish to hide the Wizard on startup, you should click the Configure icon on the toolbar, select the Profiles tab in the Configuration dialog, and then deselect "Run wizard at startup" and click OK to save this change. To enable the Wizard, repeat these steps and select this option.

Browsers



The Browsers page is the first page seen in the UltraSentry Wizard.



Task pane (1)

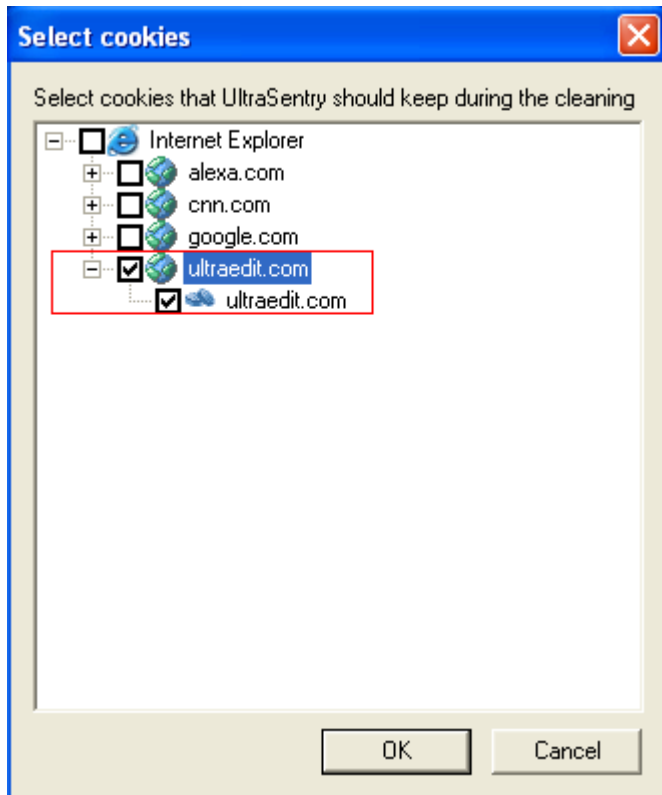
The active section of the Wizard is indicated in the (1) task pane. Users may navigate through (or skip) different sections of the Wizard by clicking on the task names listed here or by clicking Next.

Cross Browser Support (2)

UltraSentry does support cross-browser cleaning operations for Internet Explorer (IE), Mozilla FireFox, Opera, Netscape Navigator, and AOL Explorer. Use the vertical scroll bar to see all selectable browsers.

Browser Cleaning operations (3)

Users may select a browser and define the cleaning operations to be performed for that browser. Note you can specify the cleaning operation security level in this dialog to be used for all cleaning tasks related to the active browser. If a user selects the option to Clean browser cookies, they may also click on the Select cookies to keep button which will present the Select cookies dialog where users may select the cookies they want to exclude from cleaning for the active browser.



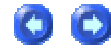
Show wizard at startup (4)

A hallmark of UltraSentry is its cleaning Wizard. The native configuration is to Show wizard at startup. Should users desire to hide the wizard upon program launch, simply check the feature off and use the main toolbar wizard icon for on demand wizard operations.

Each page of the Wizard includes the following buttons:

Prev	moves to previous page in Wizard
Next	moves to next page in Wizard
Finish	saves Wizard settings and closes dialog
Cancel	cancels changes to active profile and closes Wizard
Help	launches context-sensitive Help

Temporary Files Cleaning



The Temporary Files Cleaning page of the Wizard includes the following items:

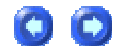


System Temporary Files	Folder where most applications store temporary files. UltraSentry looks at the TEMP variable for this.
User Temporary Files	Folder where most applications store temporary files. UltraSentry looks at the TMP environment variable for the current user for this.
Recycle Bin	<p>The standard Windows Recycle Bin - a virtual folder where deleted files and folders are stored until you clear or restore them.</p> <p>The standard Windows Empty Recycle Bin command does not actually destroy the data. It is still recoverable. If you have added Recycle Bin in the list of Auto-Cleaner, it will secure delete data from the Windows Recycle Bin.</p>

Scan Disk Temporary Files	If this option is selected, .CHK files created by the Windows utility Scan Disk will be deleted from system drives. These files usually contain junk data and can be erased to help keep drives clean.
Download Directories	Files and file components that you have downloaded from the web can be harmless, but sometimes they can contain viruses, spyware, or adware applications. If you select the Download Directories option, UltraSentry will clean out the default Windows download folder and you may also specify other folders that should be cleaned out as well. This process will also un-register the ActiveX components in the specified directories and mark them for deletion on reboot.

For each item defined above the user may select a previously defined deletion method from the dropdown dialogs to the right of each item.

User Files



The User Files Cleaning page of the Wizard includes the following items:



My Favorites	Folder where the Operating System stores Favorite Links for your profile
My Pictures	Folder with the same name where the Operating System suggests that you keep your images. If it does not exist, this item will be grayed and inaccessible.
My Music	Folder with the same name where the Operating System suggests that you keep your music. If it does not exist, this item will be grayed and inaccessible.

For each item defined above the user may select a previously defined deletion method from the dropdown dialogs to the right of each item.

History List Cleaning



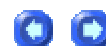
The History List Cleaning page of the Wizard includes the following items:



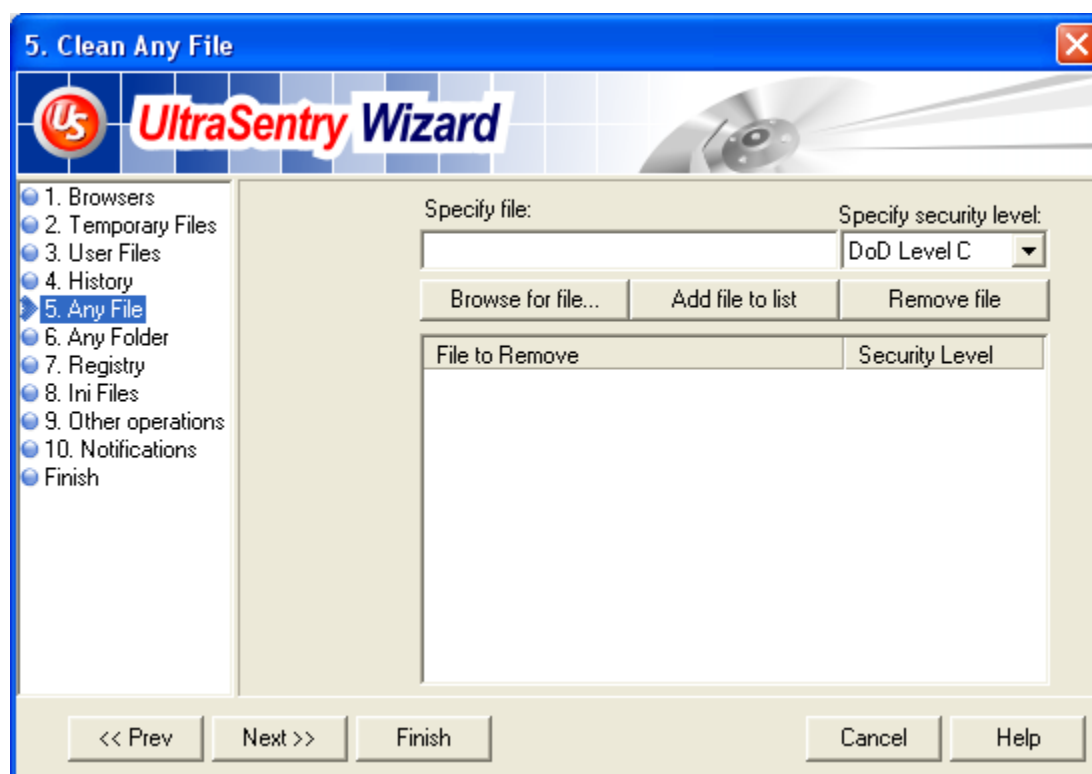
Recently Used Documents List	folder where the Operating System stores a list of shortcuts for recently used documents.
Common Dialogs History	Common Dialogs are the standard Windows file open/save boxes that most programs use to open and save files. Some versions of Windows maintain hidden history lists for these boxes.
Network Places History	folder where Operating System stores your network connections to other computers and network shares.
Media Player Recent Files List	place where the Operating System stores a list of recently played media files and URLs. If it does not exist, this item will be grayed and inaccessible.
Run History	place in Registry where Operating System stores your recent executed commands (menu Start -> Run...)
Search History	place in the Registry where Operating System stores your recent requests for search for files or folders.
Start Menu Click History	The Start menu click history is a hidden encrypted database in the system registry, which remembers a wide range of information about what you have clicked on your start menu. The dates and times of mouse clicks are stored with the names of programs started.
Start Menu Order History	When items are moved around on the Start menu, a separate memory of their names and their positions is stored as the Start menu order history.

For each item defined above the user may select a previously defined deletion method from the dropdown dialog to the right of this group of items.

Any File



The Any File page in the Wizard is used to define specific files that should be removed when the active profile is run.

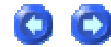


The full file path and name should be entered in the Specify File textbox and the appropriate security level (deletion method) should be selected in the associated dropdown. If you're not sure of the exact path, you can press the Browse for File button and browse to find the correct file. Once this is done the Add File to List button should be pressed to add the specified file to the list of files to be deleted with the profile. If a file is incorrectly added to the list you may select it and press the Remove File button to delete it from the profile list.

If a file specified for cleaning has alternate data streams associated with it, these will automatically be cleaned along with the specified file. Alternate data streams allow files to be associated with more than one data stream. For example, a file such as text.txt can have an alternate data stream with the name of

text.txt:secret.txt (of form filename:ads) that can only be accessed by knowing the ADS name or by specialized directory browsing programs.

Any Folder



The Any Folder page in the Wizard is used to define specific folders that should be removed when the active profile is run.

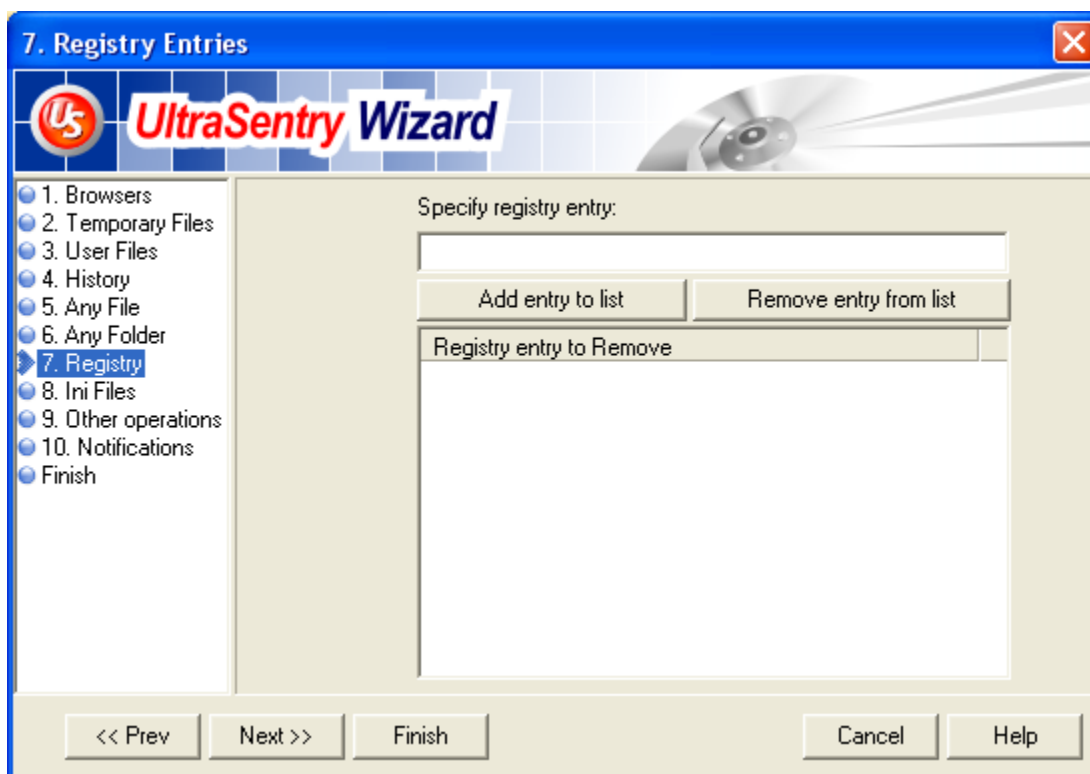


The full path should be entered in the Specify Folder textbox and the appropriate security level (deletion method) should be selected in the associated dropdown. If you're not sure of the exact path, you can press the Browse for Folder button and browse to find the correct folder. Once this is done the Add Folder to List button should be pressed to add the specified folder to the list of folders to be deleted with the profile. If a folder is incorrectly added to the list you may select it and press the Remove Folder button to delete it from the profile list.

Registry



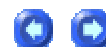
The Registry page of the Wizard may be used to identify specific parts of the Registry that should be deleted.



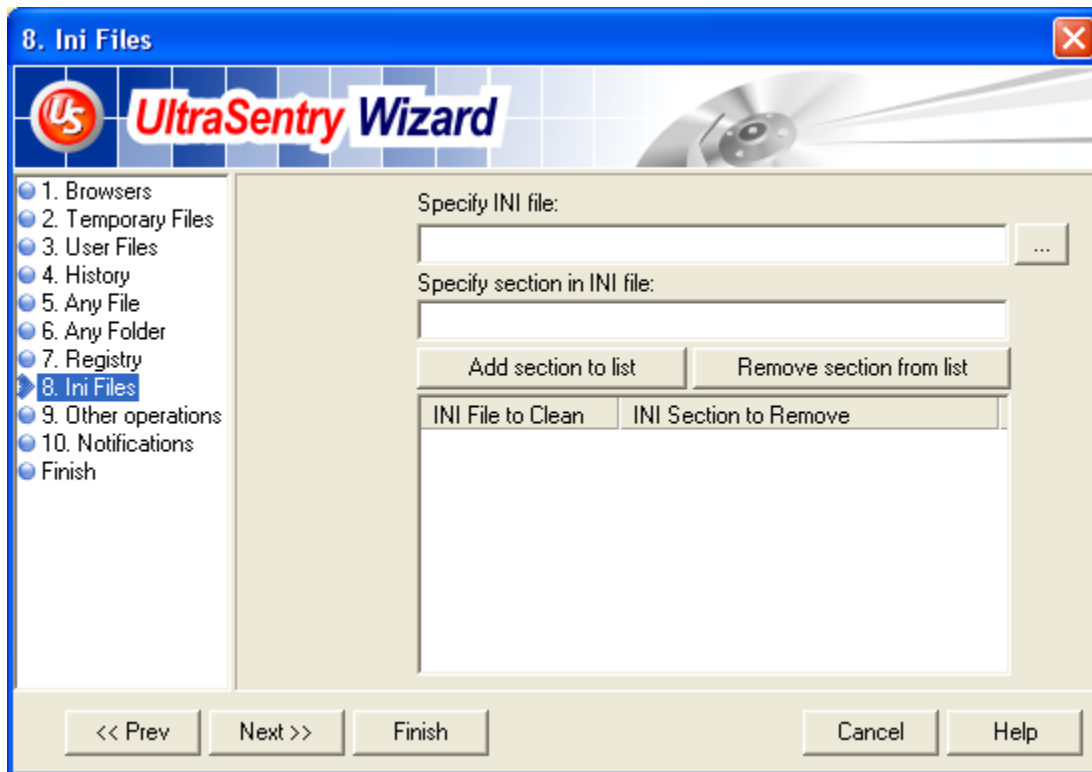
Items specified in the textbox may be added to the list using the Add Registry Entry to List button and entries may be removed from the list with the Remove Registry Entry from List button.

Please note: If you are not comfortable working in the Registry we do not recommend that you do anything at this level. Modifying Registry items without a knowledge of their function can have severe consequences.

INI Files



The INI Files page of the Wizard may be used to identify specific INI files or sections of INI files that should be deleted.



You may specify the full path to an INI file in the textbox or you may press the "..." button to browse to the INI file you'd like to delete.

If you prefer you may specify only a section in an INI file to remove. You would have to identify the INI file in the Specify INI File textbox and then you can provide a section heading in the Specify Section in INI File textbox and only that indicated item would be cleaned.

Items specified in the textbox may be added to the list using the Add INI Section to List button and entries may be removed from the list with the Remove INI Section from List button.

Other Operations



The Other Cleaner Operations page of the Wizard includes the following items:

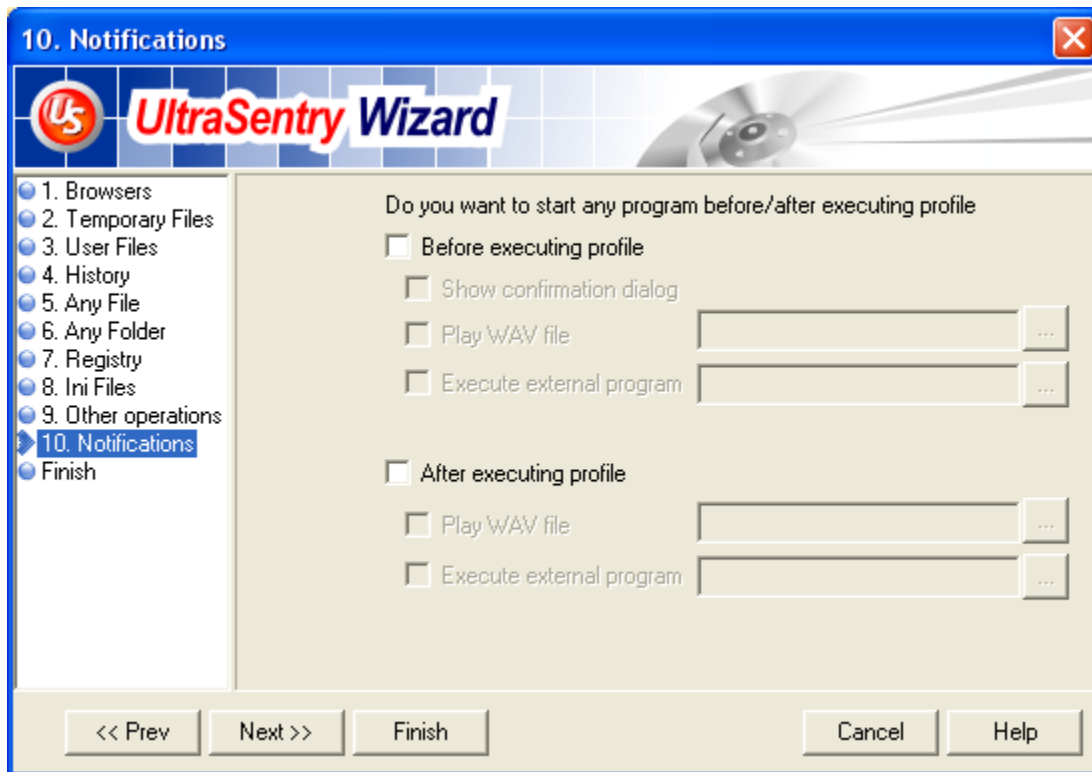


Swap File	Windows swap file. Potentially Windows could place some sensitive data in the swap file.
Hibernation File	file used to store RAM content when Windows performs hibernation (this item is currently inactive)
Clipboard Data	contents of Windows clipboard
Wipe Unused Disk Space	overwrites data on the selected disk that doesn't belong to any other file with selected security level
Clean File Slack Space	File Slack Space refers to the unused portion of a cluster on a hard drive that a file is stored on. If this option is selected UltraSentry will scan the selected drives for slack space and remove it.

If the Wipe Unused Disk Space or Clean File Slack Space options are selected, users may select what disks to wipe and the security level that should be used for this operation.

Notifications

The Notifications dialog may be used to configure actions which should be executed prior to or just after executing the profile being defined.

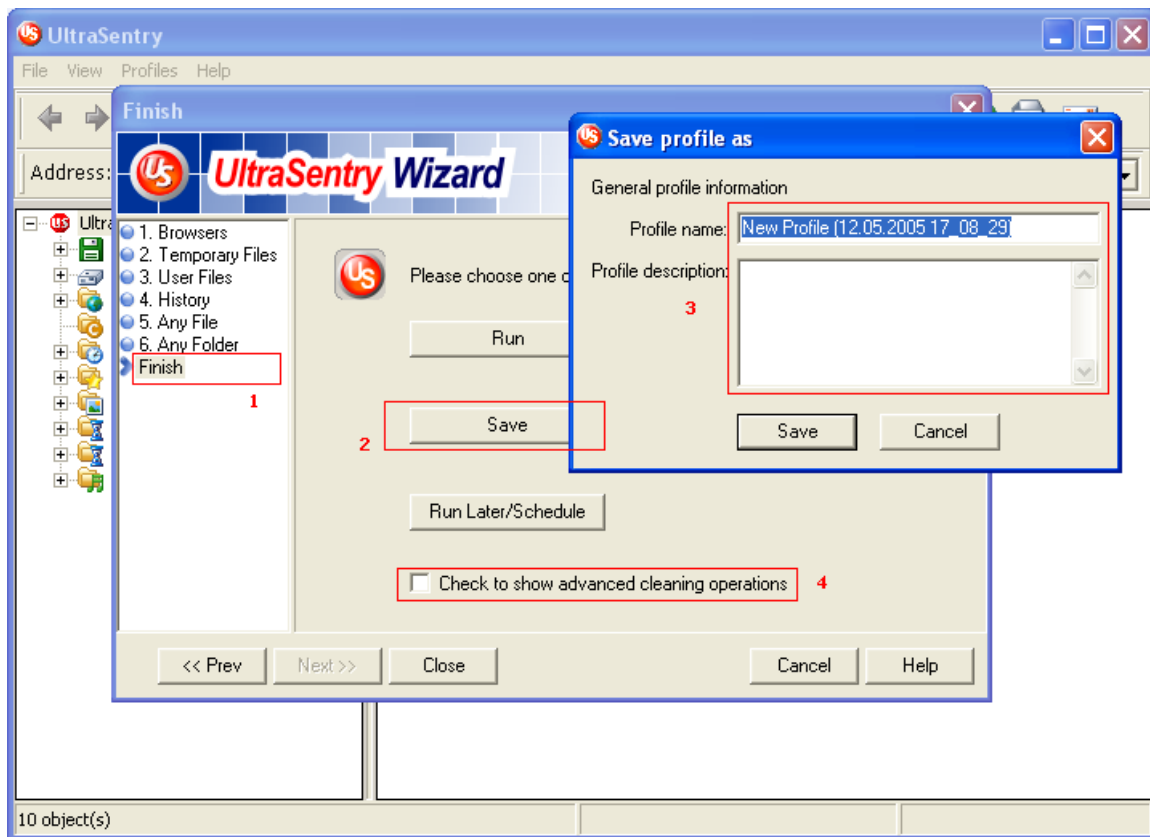


Available options include Show Confirmation Dialog, Play Wav File, Execute External Program.

Finish



The Finish page of the Wizard is used to wrap up the profile definition process.

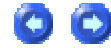


When (1) Finish is selected in the task pane of the Wizard, users may choose either Run, Save, or Run Later/Schedule for newly defined profile. If (2) Save is selected, the (3) Save profile as dialog is presented and users can define a Profile name and Profile description for future reference so the profile can be saved and run again at a later date.

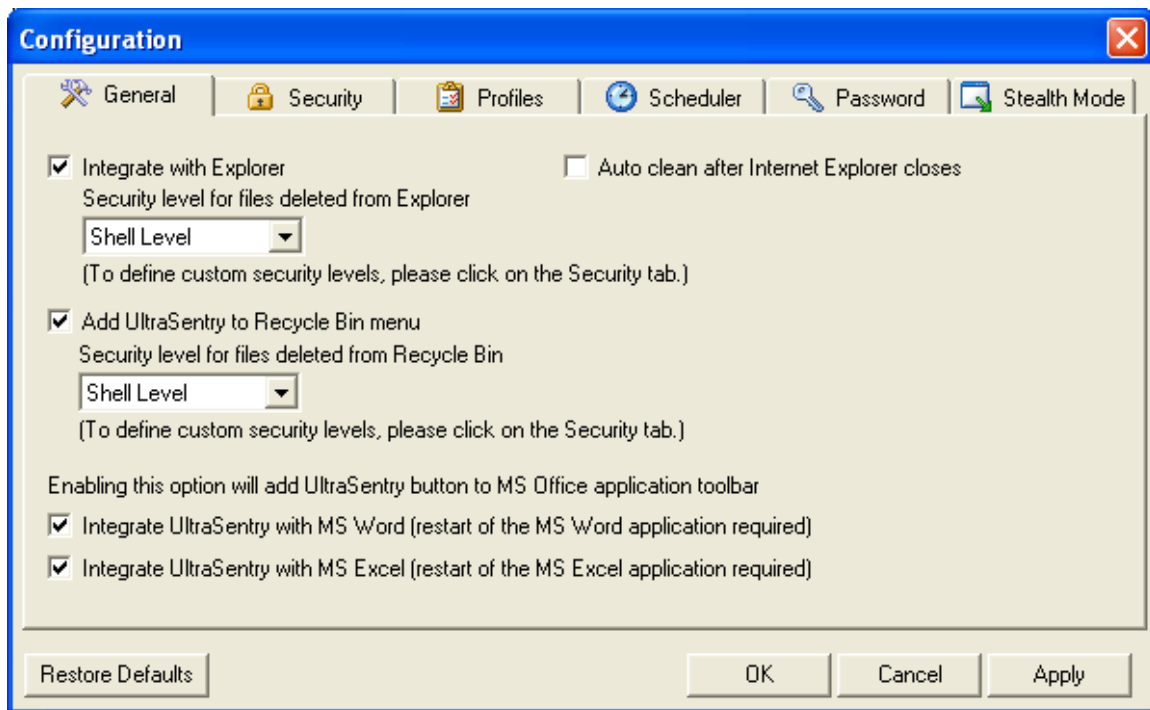
If (4) Check to show advanced cleaning operations is selected then the Advanced cleaning options will be shown in the task pane. If this is not selected then a run/save option should be selected and the Close button may be used to dismiss the Wizard.

Configuration

General



The General tab in the Configuration dialog allows the user to configure UltraSentry to be integrated into the context menu for various Windows applications.



General Configuration tab

Explorer Integration

There is a checkbox that allows the user to configure UltraSentry to be integrated with Explorer. When this is selected the user may right click on a file/directory name and select UltraSentry from the context menu to have the selected item deleted with the security level specified here in the Configuration dialog.

UltraSentry Help

There are three predefined security levels available if this option is selected: DoD Level C, DoD Level D, and Shell Level.

To define custom security levels to be used in Explorer click on the Security tab in the Configuration dialog.

Auto Clean when Internet Explorer Closes

There is a checkbox that allows the user to configure UltraSentry to automatically run the Browser Cleanup profile whenever Internet Explorer is closed.

Recycle Bin Integration

There is also a checkbox that allows the user to configure UltraSentry to be integrated into the context menu for the Recycle Bin. When this is selected the user may right click on the Recycle Bin and select UltraSentry from the context menu to have the contents of the Recycle Bin deleted with the security level specified here in the Configuration dialog.

The security level dropdown for the Recycle Bin configuration item works the same as the item for Explorer integration.

COM DLL add-on for Office 2003

There are two checkboxes associated with the COM Object DLL add-on for Microsoft Office 2003. This function allows the user to not only securely delete the recently opened documents list from within Microsoft Word and Microsoft Excel, but also to enables secure file deletion from within the applications themselves. Users may select the item to configure this for either Microsoft Word or Microsoft Excel (or both) as desired.

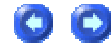
Once enabled, UltraSentry will add an icon on the toolbar of the applicable program. Clicking on the icon will display the recently opened document list and users may securely delete any and all history of the document or the file itself.

Restore Defaults

Note that UltraSentry is highly configurable. Should you desire to return to the original installation settings of the program, simply click the Restore Defaults button on any of the configuration

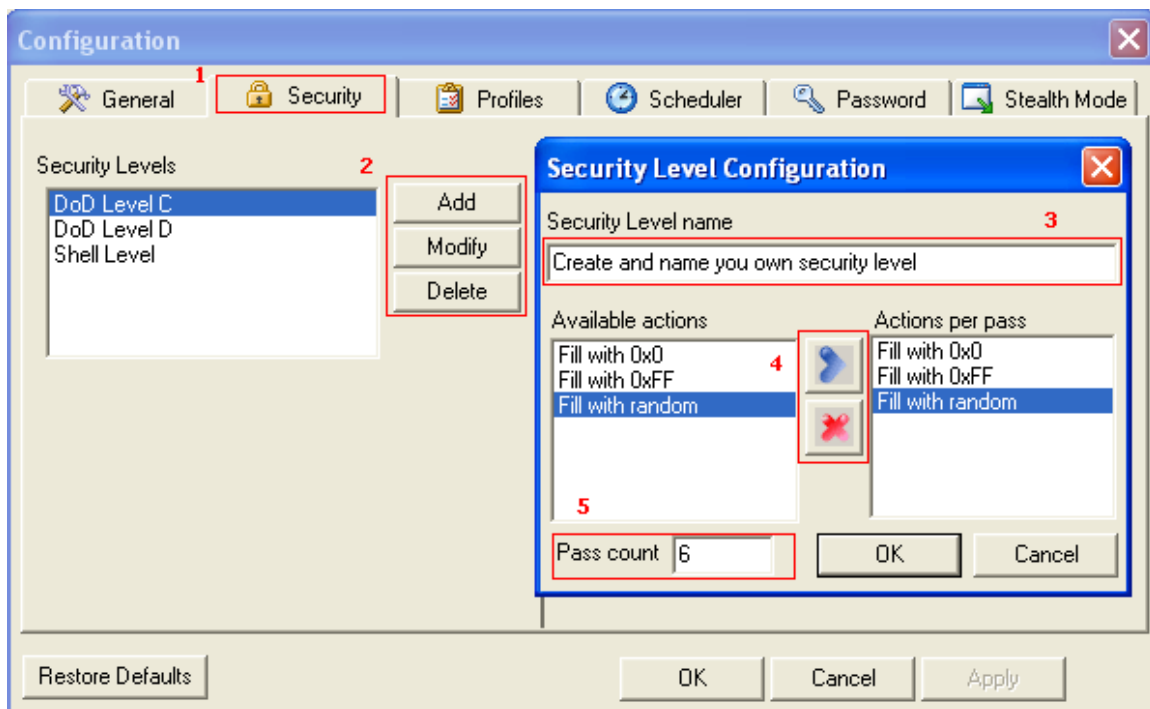
dialog tabs. This action will restore UltraSentry to the initial state the program was in upon initial installation and all custom settings will be lost.

Security



Security Tab (1)

The Security tab in the Configuration dialog allows the user to define what actions should occur when an item is deleted with a selected security level.



Options (2)

There are three options a user has when working with the items associated with the selected Security Level - Add, Modify, and Delete.

Adding a Security Level

Clicking on the Add button presents the Security Level Configuration dialog in which new Security Levels may be defined.

Modifying a Security Level

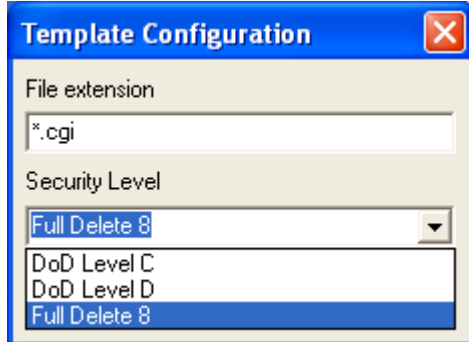
If you select a Security Level that is already listed under this tab and click the Modify button this would present the Security Level Configuration dialog allowing you to modify the actions that occur when this option is selected.

Security level name (3)

You may enter a custom security level name and then select actions associated with this security level and use the (4) "arrow" and "x" buttons to add or remove actions from the security level definition. The (5) pass count textbox may be used to specify how many times the specified actions should be repeated to satisfy the defined security level.

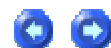
Clicking the Delete button would delete the selected Security Level from the list.

Once security levels have been defined they will be listed in the Security Level defaults list and the user may click on the Add button to present the Template Configuration dialog:



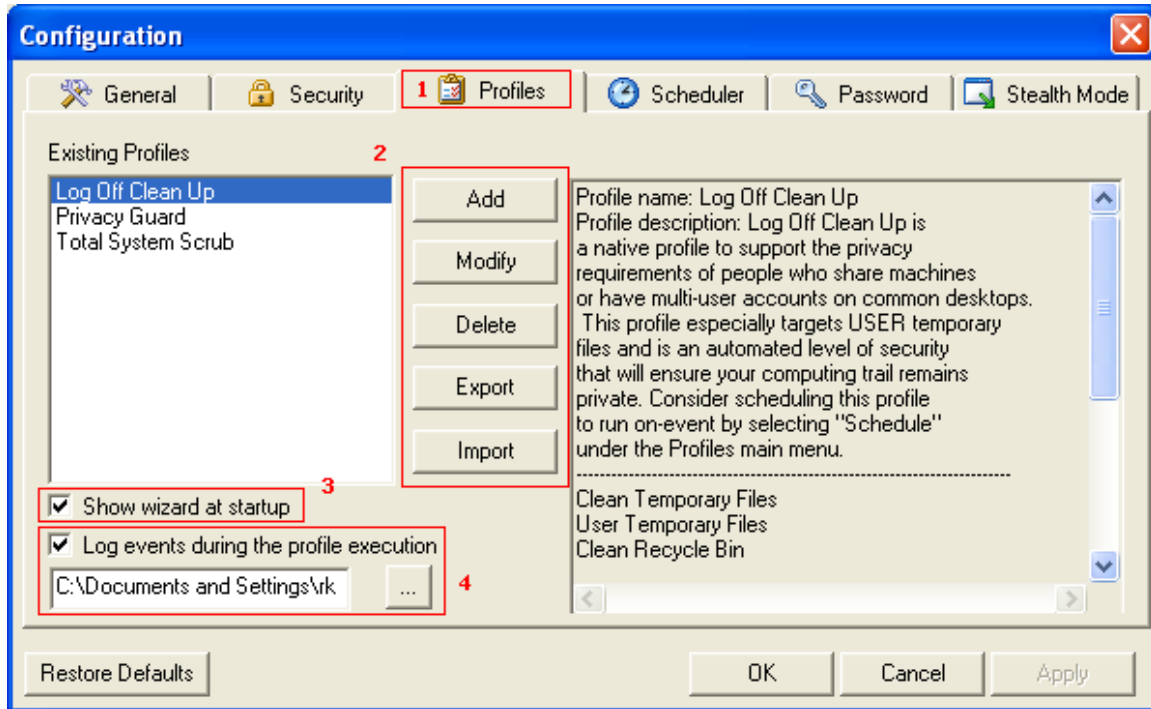
Using this dialog you may assign specific security levels as default deletion methods associated with specific file extensions. Security levels may also be modified or deleted from the Security Level defaults list with the associated buttons.

Profiles



Profiles Tab (1)

The Profiles tab in the Configuration dialog allows the user to Add, Modify, Delete, Export and Import profiles.



Adding Profiles (2)

Pressing the Add button will invoke the UltraSentry Wizard where Profile options may be defined. All profiles that are created in UltraSentry are automatically saved to the Registry under the following key:

HKEY_CURRENT_USER\Software\IDM Computer Solutions\UltraSentry\CommonConfig\Profiles

Please note: If you are not comfortable working in the Registry we do not recommend that you do anything at this level. Modifying Registry items without a knowledge of their function can have severe consequences.

When a profile is selected, the right pane displays a description of the profile (if specified during creation of the profile) and a list of the events included in the profile. Also, when a profile is

selected, the user may select the option to write the events of the selected profile to a log and specify the full path to the log file where these should be written. If this option is not selected, and a path to the log file is not defined the View Log command in the File menu will not be active once the profile is run.

Modifying Profiles

If a profile name is selected in the Existing Profiles list and you press the (2) Modify button the UltraSentry Wizard will be invoked with the settings for the selected profile pre-loaded so that you may quickly modify the options for it.

Deleting Profiles

If a profile name is selected in the Existing Profiles list and you press the (2) Delete button the selected profile will be deleted from the list and the Registry.

Exporting Profiles

If a profile name is selected in the Existing Profiles list and you press the (2) Export button the Save As dialog is presented where you can specify the directory the profile should be saved to as well as the name that should be used for saving it. By default profiles are saved with a "*.pfl" extension.

When a profile is exported to a text file rather than saved to the Registry (as is done by default) then you may share a profile with other users so that standards for protection/deletion may be adhered to.

Importing Profiles

If you press the (2) Import button the File Open dialog is presented to allow you to navigate to the desired profile and load it for use or scheduling.

Show wizard at startup (3)

If the Show wizard at startup checkbox is selected the UltraSentry Wizard will be shown each time UltraSentry is launched.

Profile execution history (4)

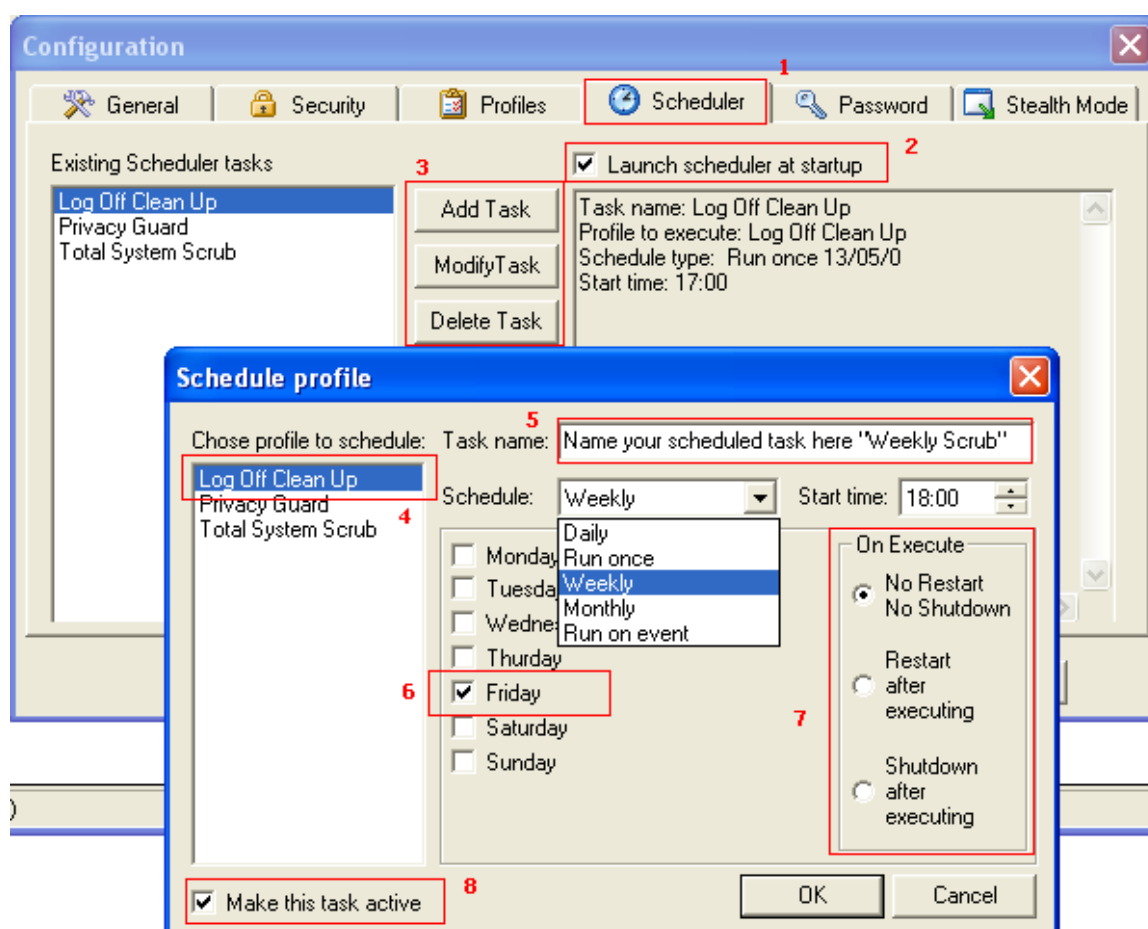
If the Log event during the profile execution option is selected then a log will be created when profiles are run.

Scheduler



Scheduler Tab (1)

The Scheduler tab in the Configuration dialog allows the user to Add, Modify and Delete scheduled tasks.



Launch scheduler at startup (2)

If the Launch scheduler at startup is selected then the Scheduler dialog will be presented when UltraSentry is launched. The user may specify that a profile be run only once, or on a recurring (weekly/monthly) basis, or select the option to run the profile whenever a specified event occurs.

Add Task (3)

If the Add Task button is pressed the Schedule profile dialog will be presented to allow users to select a profile to add to the list of Existing Scheduler tasks. Pressing the (3) Modify Task button will present the same dialog and users may (4) select the task to be modified and (5) name (or rename) the selected task and (6) specify the day of the week a schedule task should be run as well as how often the task should be run (daily, weekly, monthly). When a task has been scheduled there are three On Execute options that control what occurs once the task has been run: No Restart No Shutdown, Restart after executing, and Shutdown after executing.

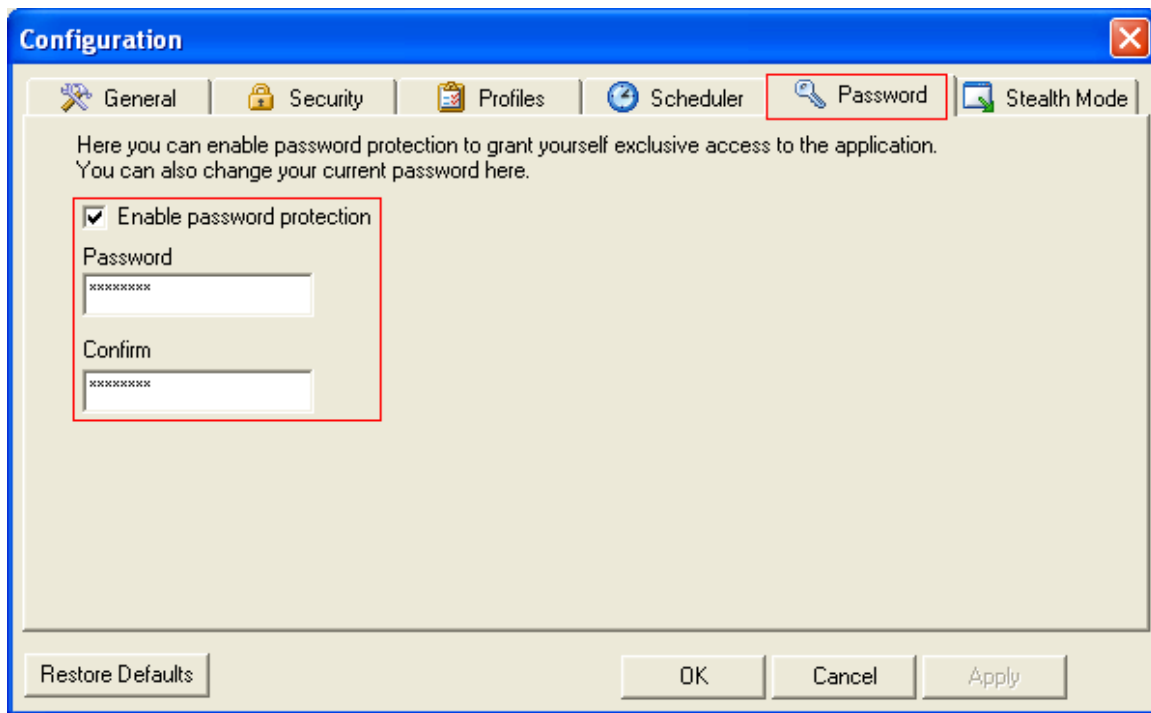
If Run on event is selected in the Schedule dropdown, users may select if the task should be executed On Logon, On Logoff, or On Shutdown. If On Shutdown is selected, users may also select whether to Restart after executing or Shutdown after executing.

If a profile is scheduled to run on event the Launch scheduler at startup option must be selected for this scheduled event to be active. If this option is not selected, UltraSentry will not check to see if there are scheduled tasks to be executed.

Password



The Password tab in the Configuration dialog allows the user to determine whether a password should be required to run UltraSentry.



This option is included to prevent unauthorized users (children, novice computer users) from using UltraSentry and accidentally deleting important files. If the Enable password protection checkbox is selected then a password will always be required when UltraSentry is launched.

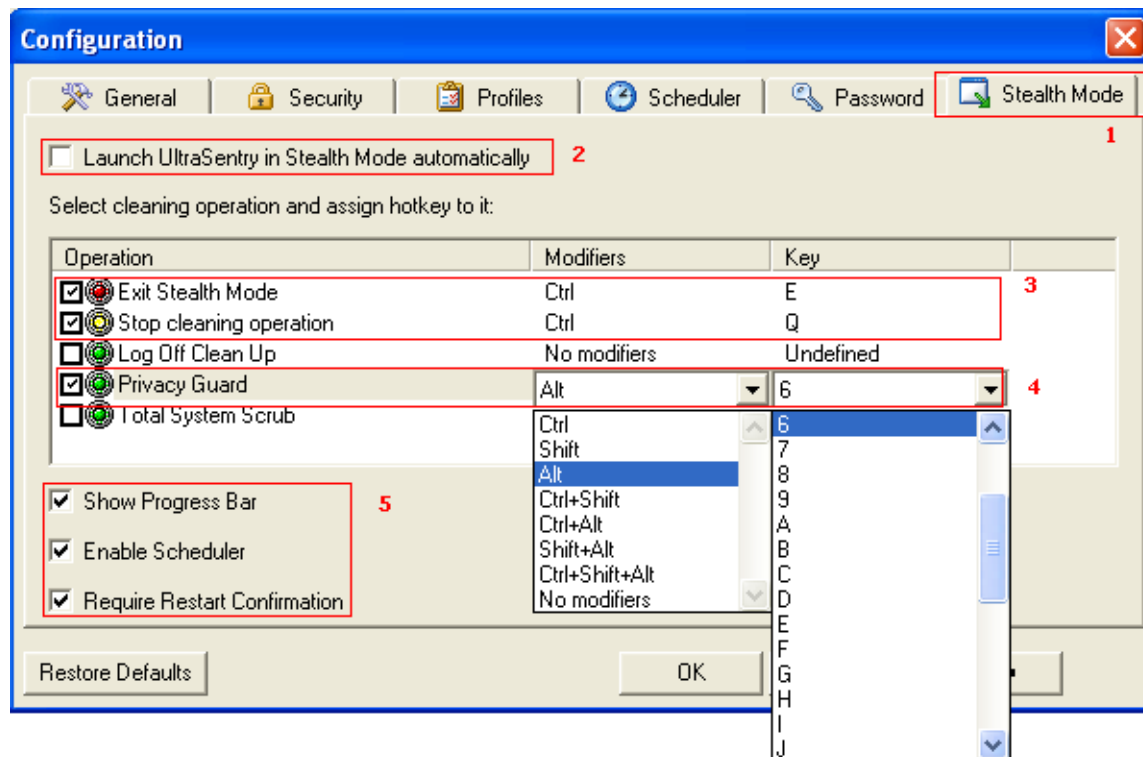
If a password is required on startup and the correct password is not provided then UltraSentry will return an error and not allow the user to proceed.

Stealth Mode



Stealth Mode tab (1)

The Stealth Mode tab in the Configuration dialog is used to configure options for running UltraSentry in Stealth Mode.



Automated Stealth Mode launch (2)

If preferred, users may select the option to Launch UltraSentry in Stealth Mode automatically.

Hotkeys (3)

Users may (3) configure hotkeys for various cleaning operations. By default, you may exit Stealth Mode by pressing Ctrl+E. Using these the user may exploit the functionality of UltraSentry without opening the application. As shown in the example above (4), Alt+6 has been configured as the hotkey to execute the Privacy Guard profile. If the user has enabled the Stealth Mode option and presses Alt+6, UltraSentry will execute the native Privacy Guard profile, show the progress bar and interrupt the restart sequence to request restart permission.

The modifiers and keys for an operation may be customized by clicking in the modifier/key field and selecting the desired items from the associated dropdown.

Stealth Mode Options (5)

If Show Progress Bar is selected, Stealth Mode cleaning operations will be displayed during execution.

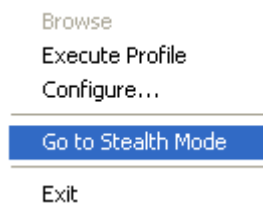
If Enable Scheduler is selected, scheduled events will run in Stealth Mode.

Many cleaning operations require a restart to complete due to registry entries and locked files. If Require Restart Confirmation is selected, Stealth Mode cleaning operations that result in a required restart to complete will be interrupted by a confirmation dialog. Once the users selects "yes" for the restart request, UltraSentry will restart the computer without offering a confirmation dialog upon completion of the Stealth Mode cleaning operation.

Note: It is recommended to always check Require Restart Confirmation on any UltraSentry profile execution in order to protect the user from losing unsaved files.

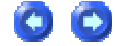


If the Stealth Mode icon (3) is clicked on the toolbar, a confirmation dialog will be presented to place UltraSentry into Stealth Mode and cleaning operations may be run using defined hotkeys. You may also enter Stealth Mode by right clicking the UltraSentry system tray icon and selecting this option from the context menu (as shown below).



Sales and Support

Sales



You may place an order for UltraSentry on our site at:

<https://www.regnow.com/softsell/nph-softsell.cgi?items=13142-1>

or you may contact us using the following numbers:

Telephone: (513) 892-8600

Fax: (513) 892-4915

Orders may also be mailed to us at:

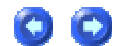
IDM Computer Solutions, Inc.

5559 Eureka Dr., Ste. B

Hamilton, OH 45011

If you have questions regarding pricing or licensing options please contact us at: sales@idmcomp.com.

Technical Support



You can obtain free support for UltraSentry if you've registered and paid for a license.

Free Email Support

For free technical support from IDM Computer Solutions, Inc., please email any questions/suggestions to support@idmcomp.com.

Free User-to-User Support Forum

Users may exchange tips and observations in the UltraSentry User's Forum on our site. This is not intended as a replacement for technical support, but many times users can help each other and this can be useful in creating a community of users.

License Agreement

License Agreement - Registered



This is a legal agreement between you (either an individual or an entity) and IDM Computer Solutions, Inc. By opening the sealed software packages (if appropriate) and/or by using the SOFTWARE, you agree to be bound by the terms of this Agreement.

SOFTWARE LICENSE

1. **GRANT OF LICENSE.** This License Agreement (License) permits you to use a single copy, or multiples copies if you are the only user of the software product identified above, which may include user documentation provided in on-line or electronic form (SOFTWARE). The SOFTWARE is licensed as a single product, to an individual user, or group of users for Multiple User Licenses and Site Licenses. This Agreement requires that each user of the SOFTWARE be Licensed, either individually, or as part of a group. A Multi-User License provides for a specified number of users to use this SOFTWARE at any time. This does not provide for concurrent user Licensing. Each user of this SOFTWARE must be covered either individually, or as part of a group Multi-User License. The SOFTWARE is in use on a computer when it is loaded into the temporary memory (i.e. RAM) or installed into the permanent memory (e.g. hard disk) of that computer. This software may be installed on a network provided that appropriate restrictions are in place limiting the use to registered users only.

2. **COPYRIGHT.** All physical copies of the software are the property of the registered user(s) but use of the software is restricted according to the terms as specified above (GRANT OF LICENSE). The SOFTWARE is protected by United States Of America copyright laws and international treaty provisions. All Intellectual Property Rights (IPR) remain the property of IDM Computer Solutions, Inc. You may not copy the printed materials accompanying the SOFTWARE (if any), nor print copies of any user documentation provided in on-line or electronic form unless for the specific use of a legally registered user as specified above (GRANT OF LICENSE). You must not redistribute the registration codes provided, either on paper, electronically, or any other form.

3. **OTHER RESTRICTIONS.** The registration notification provided, showing your authorization code and this License is your proof of license to exercise the rights granted herein and must be retained by you. You may not rent or lease the SOFTWARE, but you may transfer your rights under this License on a permanent basis, provided you transfer this License, the SOFTWARE and all accompanying printed materials, retain no copies, and the recipient agrees to the terms of this License. You may not reverse engineer, decompile, or disassemble the SOFTWARE, except to the extent the foregoing restriction is expressly prohibited by applicable law.

4. **INSTALLATION.** Upon installation, the digital rights manager of this software product will incorporate your computer systems hardware characteristics into your software; thus limiting its use to your licensed machines. These characteristics, such as your memory card, sound card, bios and OS versions; etc. will simply convert to a string of characters upon installation and serve as your product key. There is no information other than your hardware components that comprise this key. At no time will the digital rights manager collect, use, or see any information on your computer that could compromise your privacy and personal information. As with most digital rights managers, any instance of unauthorized installation attempts will be reported to our

distribution logs and may be further investigated as the publisher of the software product you are installing reserves all rights to enforce its copyright and intellectual property privileges under US federal, state and local copyright infringement statutes.

LIMITED WARRANTY

LIMITED WARRANTY. IDM Computer Solutions, Inc. warrants that the SOFTWARE will perform substantially in accordance with the accompanying printed material (if any) and on-line documentation for a period of 365 days from the date of receipt.

CUSTOMER REMEDIES. IDM Computer Solutions, Inc. entire liability and your exclusive remedy shall be, at IDM Computer Solutions, Inc. option, either (a) return of the price paid or (b) repair or replacement of the SOFTWARE that does not meet this Limited Warranty and that is returned to IDM Computer Solutions, Inc. with a copy of your receipt. This Limited Warranty is void if failure of the SOFTWARE has resulted from accident, abuse, or misapplication. Any replacement SOFTWARE will be warranted for the remainder of the original warranty period or thirty (30) days, whichever is longer.

NO OTHER WARRANTIES. To the maximum extent permitted by applicable law, IDM Computer Solutions, Inc. disclaims all other warranties, either express or implied, including but not limited to implied warranties of merchantability and fitness for a particular purpose, with respect to the SOFTWARE and any accompanying written materials.

NO LIABILITY FOR CONSEQUENTIAL DAMAGES. To the maximum extent permitted by applicable law, in no event shall IDM Computer Solutions, Inc. be liable for any damages whatsoever (including, without limitation, damages for loss of business profits, business interruption, loss of business information, or other pecuniary loss) arising out of the use or inability to use the SOFTWARE, even if IDM Computer Solutions, Inc. has been advised of the possibility of such damages.

Index

A

About UltraSentry 21

Add 19

Alternate data streams 31

Any File 31

Any Folder 32

Arrange Icons by 19

Auto Clean when Internet Explorer
Closes 39

B

Browsers 24

C

Check for Updates 20

Clean File Slack Space 34

Command Line Options 7

Common Dialogs History 29

Configuration 15

D

Default Profiles 8

Delete 13

Details 18

Download Directories 26

E

Execute 19

F

File Menu 13

Finish 36

Folder Tree 18

G

General 39

Getting Started 20

H

Help Menu 20

History List Cleaning 29

I

Index 20

INI Files 33

L

Large Icons 18

License Agreement - Registered 53

List 18

M

Modify 19

N

Notifications 35

O

Other Operations 34

P

Password 46

Profiles 42

Profiles Menu 19

R

Refresh 18

Register UltraSentry 20

Registering UltraSentry 4

Registry 32

S

Sales 51

Scan Disk Temporary Files 26

Schedule 19

Scheduler 45

Secure Delete 13

Secure Delete with Level 14

Security 41

Small Icons 18

Start Menu Click History 29

Start Menu Order History 29

Status Bar 17

Stealth Mode 47

System Requirements 3

T

Technical Support 51

Temporary Files Cleaning 26

Toolbar 16

U

User Files 28

User Forums/Support 20

Using UltraSentry 3

V

View Log 15

View Menu 16

W

Wizard 23

Wizard (Hide) 23