

UltraCompare Help

Table Of Contents

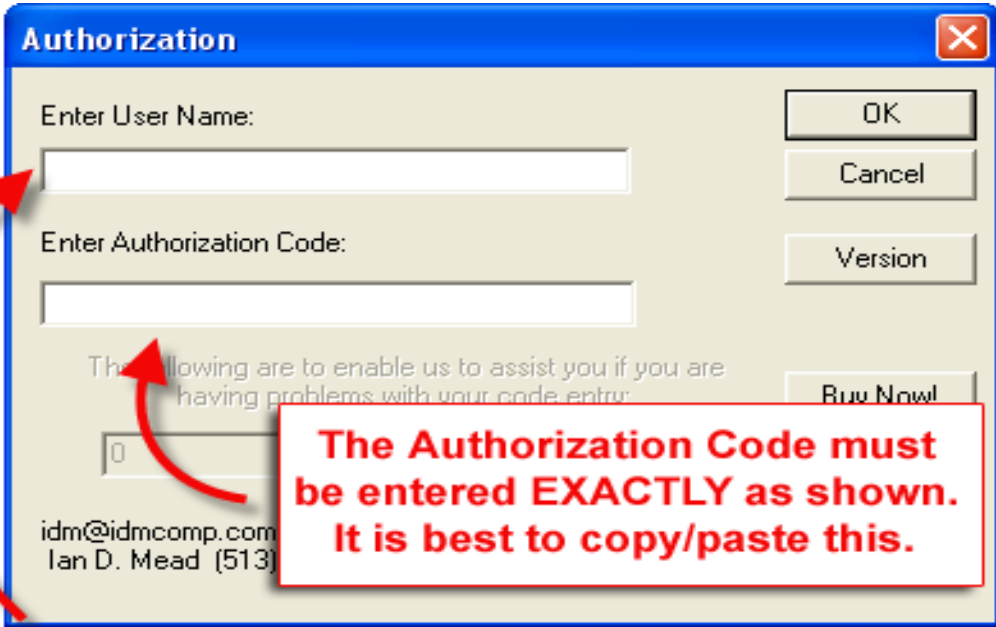
Getting Started.....	1
Menu Commands	13
File Menu	13
Edit Menu.....	17
View Menu.....	20
Mode Menu	23
Options Menu.....	24
Merge Menu	30
Window Menu.....	33
Help Menu.....	35
Toolbar Summary.....	39
Opening and Comparing Files	41
Opening and Comparing Folders	47
FAQ.....	51
Sales and Support.....	53
License Agreement.....	55
Index.....	57

Getting Started

Registering UltraCompare

The user name and authorization code provided for UltraCompare are case sensitive and must be entered EXACTLY as received from IDM Computer Solutions, Inc.

The EASIEST and MOST RECOMMENDED way to enter the code correctly is to copy it from the message received from IDM using the clipboard (select it and then copy to clipboard), then paste it into the authorization dialog edit box (using Ctrl+V).



The screenshot shows the 'Authorization' dialog box with the following fields and buttons:

- Enter User Name:** A text input field with a red arrow pointing to it from a callout box below.
- Enter Authorization Code:** A text input field with a red arrow pointing to it from a callout box to its right.
- Buttons:** OK, Cancel, Version, and Buy Now!
- Footer:** idm@idmcomp.com, Ian D. Mead (513)

Two red callout boxes with white text provide instructions:

- Top Callout:** The Authorization Code must be entered EXACTLY as shown. It is best to copy/paste this.
- Bottom Callout:** The User Name must be entered EXACTLY as shown in the registration email.

Please note that if your user name includes a reference to the number of users, i.e.,

UltraCompare Help

"Acme Printing~ 8 User License"

this is part of the registration name and must be entered along with "Acme Printing".

If you do have any problems properly registering UltraCompare, please send an email to support@idmcomp.com indicating what version of UltraCompare you're trying to register and EXACTLY what you're entering for the user name and authorization code. We will reply to you as soon as possible with information to help you register your license.

Using UltraCompare



UltraCompare may be used to compare the contents of two files or of two directories (more if the Recursive Compare option is selected). It may be invoked using several methods depending on what you wish to do and what version you're running (see Opening Files or Opening Folders).

Please note: If you are running UltraCompare Lite then you would only be able to run UltraCompare while you have UltraEdit-32 running as well. UltraCompare Pro may be run regardless of whether or not UltraEdit-32 is running.

The default view of UltraCompare is split into two panes (for the files to be compared) with the menus and toolbar above. For details on opening and comparing files and folders please see Opening Files, Opening Folders, or Command Line Options.

Difference Navigation

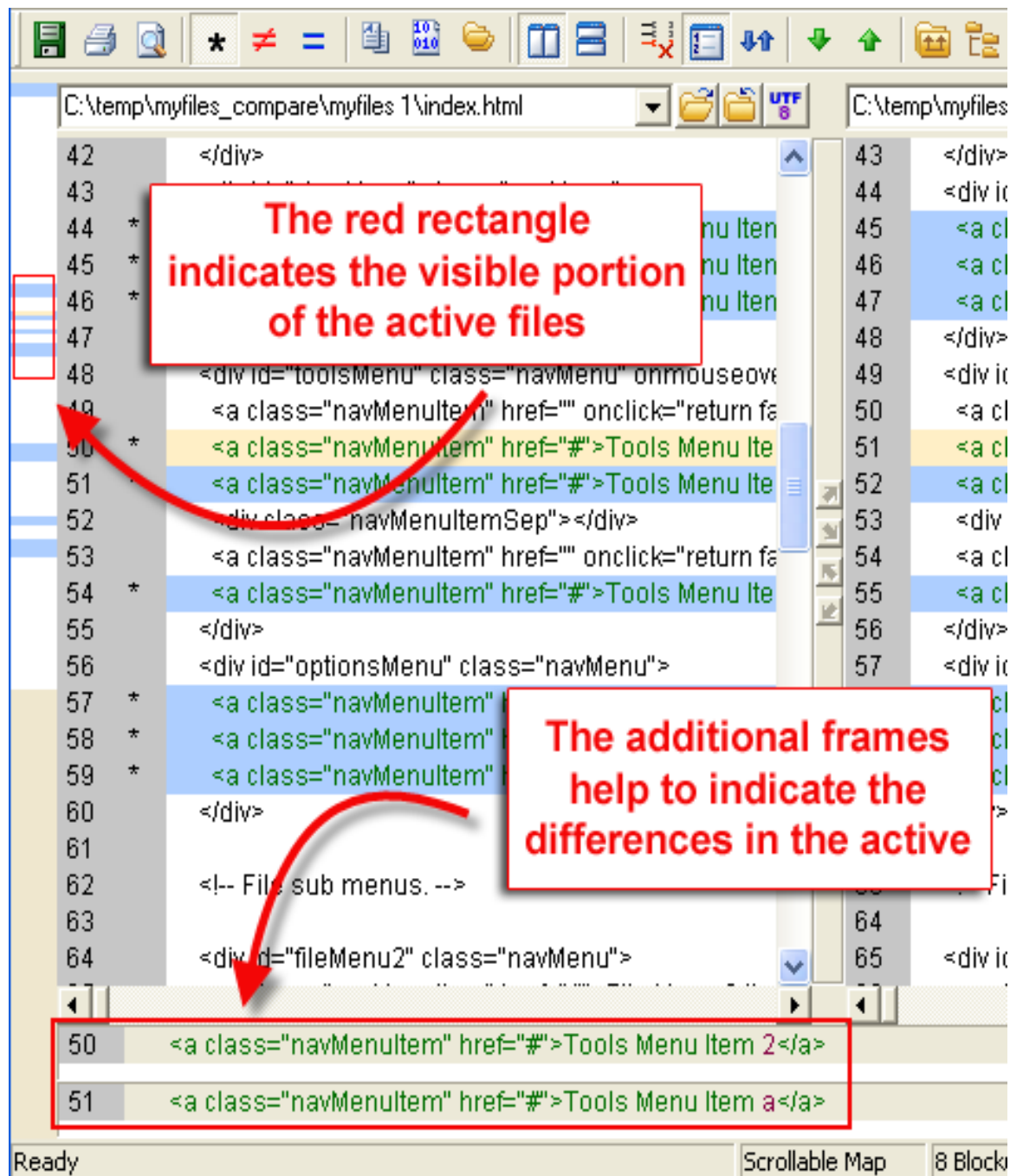
..

There are two very useful methods for navigating the differences detected by UltraCompare when two files are compared: the View Next Difference and View Prev Difference buttons on the toolbar and the graphical navigation map shown to the left of the compare panes.

Clicking on the View Next Difference button will position the cursor at the next difference in the active compare and clicking on the View Prev Difference will position the cursor at the last difference previous to the current cursor position in the active compare. These give the user an easy method for stepping through differences sequentially without having to manually search them out. These are available for navigation of all differences including Text Compares, Binary (smart) Compares, Binary (fast) Compares, and Directory Compares.

The graphical navigation map is displayed to the left of the compare panes during Text Compares. By default this is displayed in scrollable mode. If you prefer, you may click on the Scalable Map / Scrollable Map toggle in the View menu to switch to a scalable rather than

scrollable navigation map. In this mode the differences are represented for the entirety of both compared files rather than shown as a scrollable map.



Matching sections of the compared files are indicated by white blocks in the navigation map. Sections where differences occur are indicated (by default) with blue blocks. Double clicking on the graphical navigation map will position the compared files accordingly. This allows

very quick point-to-point navigation within the files rather than sequentially stepping through differences and also presents a quick overview of the number of differences between compared files. The red rectangle displayed within this space represents the visible portion of the files being compared.

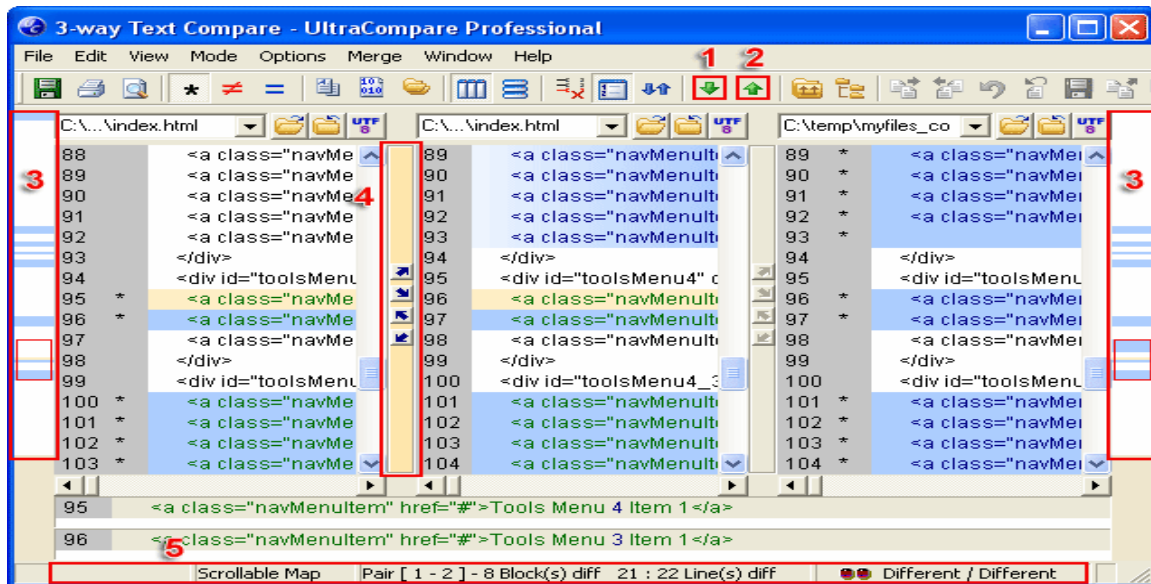
3-Way Difference Navigation

The View Next Difference [1] and View Prev Difference buttons [2] on the toolbar and the graphical navigation map [3] shown to the left and right of the compare panes are two very useful methods for navigating the differences detected by UltraCompare when files are compared:

Clicking on the View Next Difference button [1] will position the cursor at the next difference in the active compare (the pair of files with the highlighted bar [4] between them) and clicking on the View Prev Difference button [2] will position the cursor at the last difference previous to the current cursor position in the active compare. Both give the user an easy method for stepping through differences sequentially without having to manually search them out. These are available for navigation of all differences including Text Compares, Binary (smart) Compares, Binary (fast) Compares, and Directory Compares.

The graphical navigation map [3] is displayed to the left and right of the compare panes during a 3-Way Text Compare. By default this is displayed in scrollable mode. If you prefer, you may click on the Scalable Map / Scrollable Map toggle in the View menu to switch to a scalable rather than scrollable navigation map. In this mode the differences are represented for the entirety of both compared files rather than shown as a scrollable map.

Double clicking on the graphical navigation map [3] will position the compared files accordingly. This allows very quick point-to-point navigation within the files rather than sequentially stepping through differences and also presents a quick overview of the number of differences between compared files. The red rectangle displayed within this space represents the visible portion of the files being compared.



Difference Highlighting

It is important to note that in a 3-way text compare the colors used to highlight the background of the compared frames provide useful information regarding all three files at once, while the information displayed in the status bar [5] and the additional frames applies only to the active pair (indicated by the highlighted vertical bar between frames and the in the status bar with "Pair [1 - 2]" text).

Background Color	Meaning
White	data in these sections match in active frames
Blue	data in these sections are different - see symbols below for indicator
Blue Fading to White	data in these sections are different from one compared frame but match the other - this background highlighting would only be seen in Frame 2
Vertical Blue Bars	indicates empty lines (no data, no hard returns) - usually caused by padded lines added to one frame to accommodate data occurring in one file that does not exist in another

Compare Symbol	Meaning
!>	data exists in right frame but not left
<!	data exists in left frame but not right
!!	only empty lines exist here
*	data exists in both frames but is different

3-Way Folder Navigation

As of v3.10 UltraCompare Professional supports comparison of three different directories at the same time if desired. This mode may also be used to compare the content of .zip archives against folders on the file system.

The **All**, **Just Differences**, **Just Matching** [1] buttons allow users to toggle what items are shown in the folder compare and may be used to help focus on desired items in a complex compare.

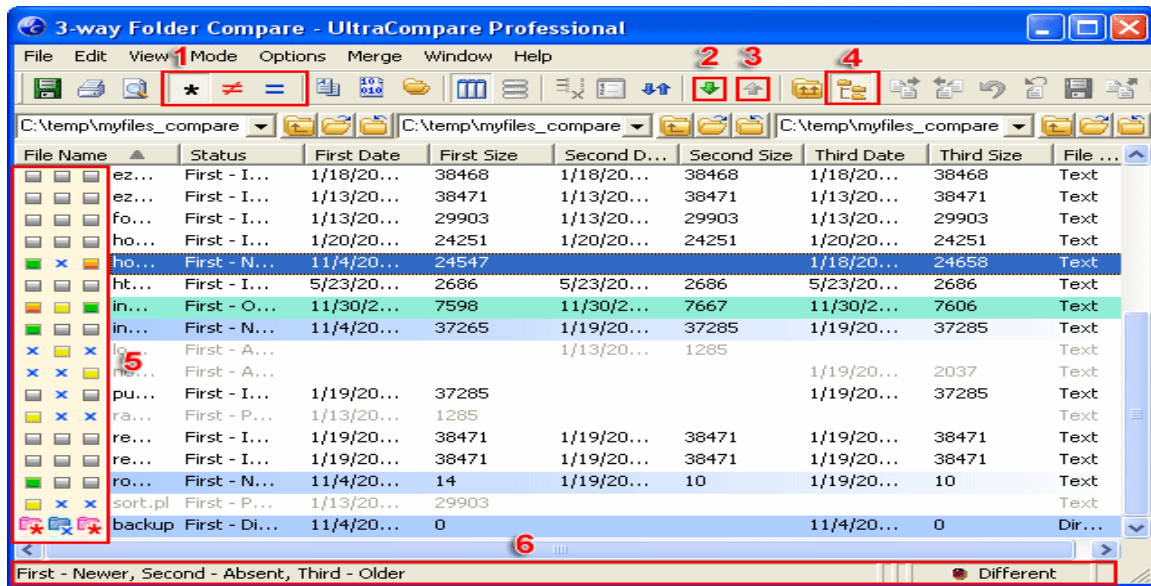
Clicking on the View Next Difference button [2] will position the cursor at the next difference in the active compare and clicking on the View Prev Difference button [3] will position the cursor at the last difference previous to the current cursor position in the active compare. Both give the user an easy method for stepping through differences sequentially without having to manually search them out. These are available for navigation of all compare modes.

Clicking on the **Recursive Compare** [4] button toggles the "depth" of the folder compare being executed. If this is selected, UltraCompare will compare all subfolders below the specified root and indicate whether the included subfolders are matching or not. If **Recursive Compare** is not selected, the compare result will indicate that subfolders either exist or don't exist in the compared folders, but will not comment on their content.

Clicking on any column heading (File Name, Status, Date, Size, File Type) will sort the result based on the content of that column. Right-clicking on a column heading presents a submenu where the user may select which columns are displayed in a Folder Compare.

The **Icon Pane** [5] provides a quick visual overview of the status of the compared items. This will indicate whether items are newer, older, or contain identical content and whether items are present or absent in the compared folders.

The **Status Bar** [6] indicates verbally what is shown in the **Icon Pane** [5] along with the summary description (to the far right) of "Different", "Matching", or "Nothing to Compare".



Folder Symbol	Meaning
	referenced file is absent
	referenced file is present
	referenced file is older than dominant file
	referenced file is identical to dominant file
	referenced file is newer than dominant file
	referenced folder is absent
	referenced folder is present
	referenced folder is different from dominant folder
	referenced folder is identical to dominant folder

Command Line Options

Command Line options for UltraCompare Professional

uc.exe [options] <path1> <path2>

UltraCompare Help

Options:

-t	text compare mode
-3	3-way text mode
-p	fast binary compare mode
-x	smart binary compare mode
-d	folder compare mode
-w	3-way folder compare mode
-i	ignore case in text compare mode
-b	ignore spaces in text compare mode
-B	ignore blank lines in text compare mode
-lt	ignore line terminators
-r	compare folders recursively in folder compare mode
-ft	force all files to be compared as text in folder compare mode
-fb	force all files to be compared as binary in folder compare mode
-a	sets Show All
-m	sets Show Matching
-ne	sets Show Differences
-o	creates output file

It is possible to invoke UltraCompare from the command line and specify a file to pass the output to as well using the following format:

```
uc.exe -o <path1> <path2> <output file path>
```

For example, if you used:

```
uc -t -o "c:\temp\test1\test1.txt" "c:\temp\test2\test2.txt" "c:\temp\output.txt"
```

then the files named test1.txt and test2.txt in the two directories specified would be compared and the output would automatically be written to the output.txt file.

If you used:

```
uc -3 -o "c:\temp\test1\test1.txt" "c:\temp\test2\test2.txt" "c:\temp\test3\test3.txt"
"c:\temp\output.txt"
```

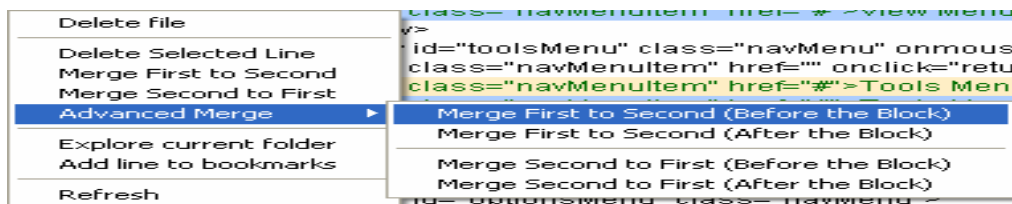
then the files named test1.txt, test2.txt and test3.txt in their respective directories would be compared and the output would automatically be written to the output.txt file.

Please note: It is not possible to invoke UltraCompare Lite from the command line.

Context Menu Options

The context menu in UltraCompare offers some very useful features for file management, merging of differences, and directory navigation in both the text compare modes and the folder compare mode.

The following commands are available in Text Compare mode:



Delete File	deletes active file from disk
Delete Selected Line	deletes selected line only in the file in which it is selected
Merge First to Second	merges selection from left file to right file
Merge Second to First	merges selection from right file to left file
Advanced Merge	merges selection from left to right (or right to left) either above or below the differenced line without overwriting the existing text
Explore Current Folder	opens Explorer to directory of active file
Add Line to	adds the selected line to the current bookmark navigation list

UltraCompare Help

Bookmarks	
Refresh	repeats compare to refresh differences indicated

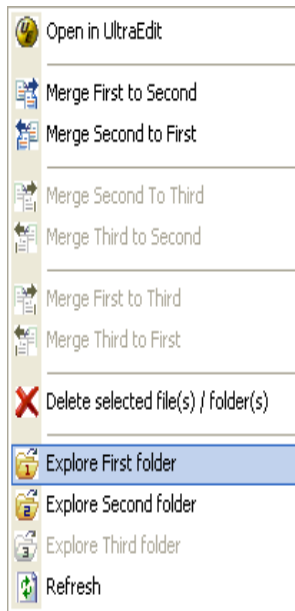
In Binary (smart or fast) Compare mode, only the Delete File from Disk, Explore Current Folder, and Refresh options are available in the context menu.

The following commands are available in Folder Compare mode:

Open in UltraEdit
Merge First to Second
Merge Second to First
Delete selected File(s) / Folder(s)
Explore First folder
Explore Second folder
Refresh

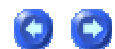
Open in UltraEdit	opens selected files in UltraEdit for editing
Merge First to Second	merges selected file from left to right directory
Merge Second to First	merges selected file from right to left directory
Delete Selected File(s)/Folders(s)	removes the selected files/folders from the active directory
Explore First Folder	opens Explorer to Source directory
Explore Second Folder	opens Explorer to Destination directory
Refresh	repeats compare to refresh differences indicated

The following commands are available in 3-Way Folder Compare mode:



Open in UltraEdit	opens selected files in UltraEdit for editing
Merge First to Second	merges selected file from first to second directory
Merge Second to First	merges selected file from second to first directory
Merge Second to Third	merges selected file from second to third directory
Merge Third to Second	merges selected file from third to second directory
Merge First to Third	merges selected file from first to third directory
Merge Third to First	merges selected file from third to first directory
Delete Selected File(s)/Folders(s)	removes the selected files/folders from the active directory
Explore First Folder	opens Explorer to first directory
Explore Second Folder	opens Explorer to second directory
Explore Third Folder	opens Explorer to third directory
Refresh	repeats compare to refresh differences indicated

UltraCompare Versions



UltraCompare is available in both Lite and Pro versions. The Lite version is packaged with UltraEdit-32 and must be invoked from within UltraEdit-32.

UltraCompare Help

A summary of features is included below to show the differences between the versions:

The Lite Version:

- * requires that UltraEdit be running
- * must be invoked by UltraEdit
- * only supports Text Compare (files)
- * supports fast binary compare, byte-by-byte

The Pro version:

- * is a standalone application and does not require that UltraEdit be running
- * supports Folder Compare (directories) as well as Text Compare (files)
- * supports smart binary compare where bytes are inserted and will realign
- * supports merge of changes
- * includes additional toolbar items not found in the Lite version

UltraCompare Pro also has several Command Line Options whereas UltraCompare Lite cannot be invoked from the command line.

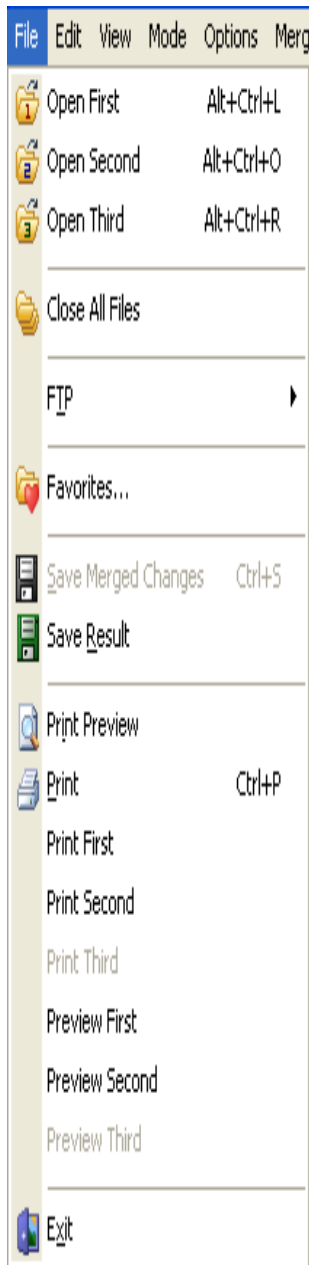
Menu Commands

File Menu

File Menu

..

The File menu offers the following commands during a text/binary/folder compare:



<u>Open First</u>	invokes File Open dialog to specify file to be opened in Source pane
<u>Open Second</u>	invokes File Open dialog to specify file to be opened in Destination pane
<u>Close All Files</u>	closes all opened documents
<u>FTP - Open from FTP</u>	opens an existing document from an FTP site
<u>FTP - Save As to FTP</u>	saves an opened document to a specified file name on an FTP site

Favorites	presents a dialog for specifying most-used compare directories
Save Merged Changes	saves changes made during previous Merge operations
Save Result	saves the result summary of the active compare as a text file
Print Preview	displays the result summary onscreen as it would appear printed
Print	prints the result summary
<u>Print First</u>	prints the left file only
<u>Print Second</u>	prints the right file only
<u>Preview First</u>	displays the left file onscreen as it would appear printed
<u>Preview Second</u>	displays the right file onscreen as it would appear printed
Exit	exits UltraCompare

The File menu offers the following commands during a 3-way text compare:

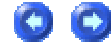
<u>Open First</u>	invokes File Open dialog to specify file to be opened in Frame 1 pane
<u>Open Second</u>	invokes File Open dialog to specify file to be opened in Frame 2 pane
<u>Open Third</u>	invokes File Open dialog to specify file to be opened in Frame 3 pane
Close All Files	closes all opened documents
<u>FTP - Open from FTP</u>	opens an existing document from an FTP site
<u>FTP - Save As to FTP</u>	saves an opened document to a specified file name on an FTP site
Favorites	presents a dialog for specifying most-used compare directories
Save Merged Changes	saves changes made during previous Merge operations
Save Result	saves the result summary of the active compare as a text file
Print Preview	displays the result summary onscreen as it would appear printed
Print	prints the result summary
<u>Print First</u>	prints Frame 1 file only
<u>Print Second</u>	prints Frame 2 file only
<u>Print Third</u>	prints Frame 3 file only
<u>Preview First</u>	displays Frame 1 file onscreen as it would appear printed
<u>Preview Second</u>	displays Frame 2 file onscreen as it would appear printed
<u>Preview Third</u>	displays Frame 3 file onscreen as it would appear printed
Exit	exits UltraCompare

Open First/Second/Third (File menu)

..

These commands invoke the File Open dialog which may be used to specify the file to be opened for compare in Text Compare mode. The same mechanism may also be used in Folder Compare mode to specify directories to be opened for compare.

Favorites (File Menu)



This command presents a dialog where frequently used directories and files may be specified. The full path for a directory or file may be manually typed in the textbox below the list pane or the Browse button may be used to browse to desired directories or files. Once a path has been entered/selected, pressing the Add button will add the specified path to the Favorite Files/Directories list for future use and you may press Open as Source or Open as Destination to open the specified directory or file in the desired pane.

Also, if currently comparing directories or files that you wish to add to the list, you may press the Add Source or Add Destination buttons to add active compare items to the Favorite Files/Directories list.

Save Merged Changes (File menu)



This command saves all merge changes made in the current compare session regardless of which file the changes were made in. This may be invoked from the File menu or the toolbar. This command is only available after a Merge operation.

Keyboard Shortcut: Ctrl+S

Save Result (File menu)



This command saves the result summary of the active file compare in text format. This may be invoked from the File menu or the toolbar and opens a Save As dialog so the user may specify where to save the result summary and what it should be named. This command is active both during a Text Compare and a Folder Compare.

Keyboard Shortcut: Ctrl+R

Print Preview (File menu)



This command displays the result summary as it would appear when printed. When you choose this command the main window will be replaced with a print preview window in which the result summary will be displayed in its printed format.

The print preview toolbar offers options to initiate a print job, move back and forth through the result summary, display one or two pages at a time, zoom in and out, and close the print preview window.

Print (File menu)

..

Use this command to print a result summary. This command presents a Print dialog box where you may specify the range of pages to be printed, the number of copies, the destination printer, and other printer setup options.

Keyboard Shortcut: Ctrl+P

Print First/Second/Third (File menu)

..

Use this command to print the selected file. This command presents a Print dialog box where you may specify the range of pages to be printed, the number of copies, the destination printer, and other printer setup options.

Preview First/Second/Third (File menu)

..

This command displays the selected file as it would appear when printed. When you choose this command the main window will be replaced with a print preview window in which the selected file will be displayed in its printed format.

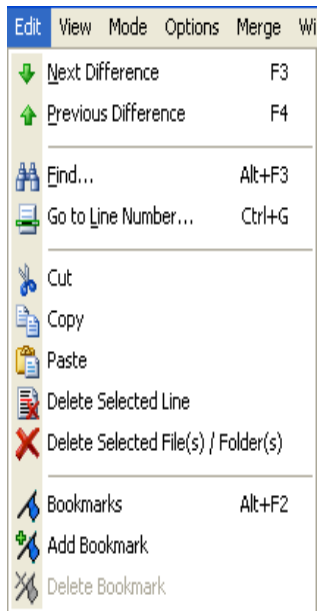
The print preview toolbar offers options to initiate a print job, move back and forth through the result summary, display one or two pages at a time, zoom in and out, and close the print preview window.

Edit Menu

Edit Menu

..

The Edit menu offers the following commands:



Next Difference	repositions to the next difference in the compared files
Prev Difference	repositions to the previous difference in the compared files
Find	searches for specified string in active file
Go to Line Number	repositions cursor to specified line in both files
Cut	deletes data from active document and moves it to the clipboard
Copy	copies data from active document to the clipboard
Paste	pastes data from the clipboard into the document
Delete Selected Line	removes the selected line from the active file
Delete Selected File(s)/Folder(s)	removes the selected files/folders from the active directory
Bookmarks	presents dialog box showing bookmarked lines for navigation
Add Bookmark	highlights line number and bookmarks active line in active file
Delete Bookmark	removes bookmark for selected line

Next Difference (Edit menu)

This command moves focus to the first line in the next group of lines marked as different.

Keyboard Shortcut: F3

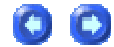
Prev Difference (Edit menu)

..

This command moves focus to the first line in the previous group of lines marked as different.

Keyboard Shortcut: F4

Find (Edit menu)



The Find command presents the Find dialog in which the user may specify a search string which UltraCompare will attempt to match in the active file. This dialog includes the options "Match whole word only" and "Match case" as well as a direction option allowing the user to specify whether UltraCompare should search upward or downward in the active file for the specified string.

Keyboard Shortcut: Alt+F3

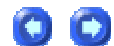
Go To Line Number (Edit menu)

..

This command presents the Go to Line Number dialog which allows the user to specify what line number focus should be reset to as well as which file (Left/Right) this should occur in.

Keyboard Shortcut: Ctrl+G

Bookmarks (Edit menu)



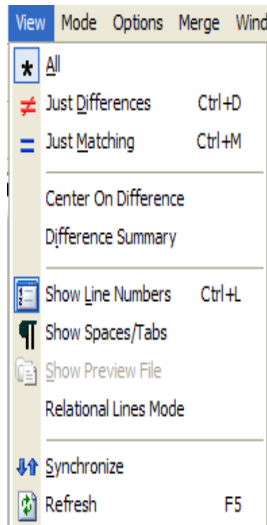
When doing a text compare of files you can right-click on a line and select Add Line to Bookmarks from the context menu to add the active line to the bookmarks list. Multiple bookmarked lines may be added to this list.

Clicking on Bookmarks in the Edit Menu will present a dialog listing the currently specified bookmarks and you may select a line from this list and press the Go To button to jump to the specified line.

View Menu

View Menu

The View menu offers the following commands:



All	displays the entire contents of both compared files
Just Differences	displays only the lines with differences
Just Matching	displays only the lines that are an exact match
Center on Difference	repositions display such that current difference is centered
Difference Summary	displays a dialog indicating the number of blocks and lines that are different
Show Line Numbers	displays line numbers in the compared files
Show Spaces/Tabs	displays spaces, tabs, and new line characters as visible characters
Show Preview File	displays preview file for active folder compare

Relational Lines Mode	changes presentation of text compare to display linking and border lines for differenced blocks between matching blocks of text
Synchronize	synchronizes the compare panes so that both files may be scrolled vertically at the same time
Refresh	repeats active compare updating the source and destination pane displays

All (View menu)



This option causes all lines in both files to be displayed.

Keyboard Shortcut: Ctrl+A

Just Differences (View menu)



This option may be selected to display only lines containing differences. This can be useful in the process of comparison and merging.

Keyboard Shortcut: Ctrl+D

Just Matching (View menu)



This option causes only lines that are identical in the compared files to be displayed.

Keyboard Shortcut: Ctrl+M

Center on Difference (View menu)



This command repositions the displayed files such that the current difference is centered.

Difference Summary (View menu)

This command presents an information dialog containing different data depending on the type of compare in progress. During a Text Compare this would summarize the number of blocks and lines that are different between the two files being compared.

During a Folder Compare the resulting dialog would summarize file and subdirectory differences in compared folders.

Keyboard Shortcut: Ctrl+D

Show Line Numbers (View menu)

Selecting this option causes line numbers for the compared files to be displayed to the left of the contents of each file. This can be particularly helpful in identifying where the same lines may occur in both files but in different locations and also helps to clarify where lines occur in only one of the compared files (in this case line numbers would not be displayed in the file in which the compared lines do not occur).

Keyboard Shortcut: Ctrl+L

Synchronize (View menu)

This option synchronizes the compare panes so that both files may be scrolled vertically at the same time by scrolling in either pane. The default is for both panes to be in sync. This command is used to re-establish synchronization if it is lost through a merge or other function.

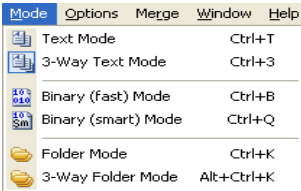
Refresh (View menu)

This command repeats the active compare to ensure that all the most up-to-date differences are displayed. This can be useful after the Edit in UltraEdit option has been used to modify one of the active files during a Text Compare or if files/folders have been modified during a Folder Compare.

Mode Menu

Mode Menu

The Mode menu offers the following commands:



Text Mode	switches active compare to Text Mode compare
3-Way Text Mode	switches active compare to 3-Way Text Mode compare
Binary (fast) Mode	switches active compare to Binary (fast) Mode compare
Binary (smart) Mode	switches active compare to Binary (smart) Mode compare
Folder Mode	switches to Folder mode (active file compare will be lost)
3-Way Folder Mode	switches active compare to 3-Way Folder Mode compare
Relational Lines Mode	switches active text compare to relation lines comparison format

Text Mode (Mode menu)

This option allows the user to switch the active compare to a text comparison regardless of what mode is active at the time this item is selected. When this mode is active a line-by-line comparison of the text in the compared files will be executed.

In the case of Word documents (.doc files) or Rich Text Format (.rtf) files, when the compare begins the text strings will be extracted from the specified files to temporary files and the comparison will be executed against these. Due to the complex nature of Microsoft Word and Rich Text Documents, only the text

information can be saved. All previous formatting will be lost. Renaming the file is advised and therefore when you click to save, UltraCompare Professional presents the Save As dialog first.

3-Way Text Mode (Mode menu) . .

This option allows the user to switch the active compare to a 3-way text comparison regardless of what mode is active at the time this item is selected. For further information please see 3-Way Difference Navigation.

Binary (fast) Mode (Mode menu) . .

This option allows the user to switch the active compare to a byte-by-byte binary comparison (fast) regardless of what mode is active at the time this item is selected.

Binary (smart) Mode (Mode menu) . .

This option allows the user to switch the active compare to a block binary comparison (smart) regardless of what mode is active at the time this item is selected. As opposed to a Binary (fast) Mode comparison which is byte-by-byte, this compare mode will show where there are matching blocks of code even if they are offset by inserted/deleted data and don't match in a byte-by-byte comparison.

Folder Mode (Mode menu) . .

This option allows the user to switch from the active file compare mode (Text, Fast/Smart Binary) to Directory mode. This will initially present an empty compare and any active file compare will be lost. This mode allows users to compare the content of .zip archives as well as folders on the file system.

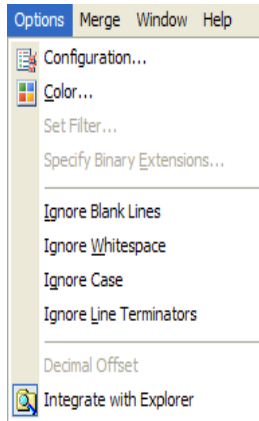
3-Way Folder Mode (Mode menu) . .

This option allows the user to switch the active compare to a 3-way text comparison regardless of what mode is active at the time this item is selected. For further information please see 3-Way Folder Navigation.

Options Menu

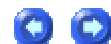
Options Menu . .

The Options menu offers the following commands:



<u>C</u> onfiguration	presents Configuration dialog with index tree to access categorized configuration options
C <u>o</u> lor	presents color and font settings dialog appropriate to the active mode
S <u>e</u> t Filter	presents Set Filter dialog allowing the user to specify what file types should be displayed in a Folder Compare
<u>S</u> pecify Binary Extensions	presents a dialog for user to specify extensions for file types to be interpreted as binary files by default (only available in Pro version)
I <u>g</u> nore Blank Lines	forces the compare to ignore lines containing only line terminators when comparing the active files
I <u>g</u> nore Whitespace	forces the compare to ignore tabs and spaces when identifying differences in the active files
I <u>g</u> nore Case	forces the compare to ignore case when identifying differences in the active files
I <u>g</u> nore Line Terminators	forces the compare to ignore line terminator differences (DOS/UNIX/MAC) in the active files
D <u>e</u> cimal Offset	switches offset displayed in binary mode from HEX to decimal
I <u>n</u> tegrate with Explorer	adds UltraCompare options to context menu in Windows Explorer

Color (Options menu)



The Colors dialog allows the user to specify color preferences for contrasting colors used for Text and Folder compares. Clicking on the colored rectangle by a text label will present a dialog from which the user may select the color to be used for the indicated item.

The Use Defaults button may be pressed to restore the default colors.

Font (Options menu)

This option will present the Set Font dialog to allow the user to specify the font to be used for the active display, including options to set the font style, size, and script to be used.

In Binary (Smart/Fast) Compare mode only monospace fonts may be selected.

Set Filter (Options menu)

This option (only available with Folder Compare mode) will present the Set Filter dialog allowing the user to specify a filter based on file extensions to determine what file types should be shown during the Folder Compare. A single file extension may be defined, i.e.:

`*.txt`

or a user may define multiple file extensions delimited by commas, i.e.:

`*.txt, *.js, *.html`

so that the matching file types may be displayed.

Specify Binary Extensions (Options menu)

This command presents the Specify Binary Extensions dialog in which the user may specify extensions and descriptions for files that UltraCompare should interpret as binary files rather than text (which is the default for undefined files).

There is a list of file types listed by default and users may remove items from this list or add to it as needed.

Key Mapping (Configuration)

The **Key Mapping** branch in **Configuration** may be used to reassign the default key mapping provided by UltraCompare Professional to suit the user's needs.

This dialog shows a list of commands within UltraCompare Professional that may be mapped by the user to a key combination of their choice. Clicking on any of the commands will show the existing key assignment (if any) and the command description below the list.

To add or change a command key assignment:

- 1) Select the command you wish to modify from the Commands list.
- 2) Clicking the mouse in the Press New Key entry window area, or TAB to give it focus.
- 3) Type the new key assignment just as you would if you were invoking the command - This key combination will be captured and displayed.
- 4) Click on the Assign button and the new key will be assigned to the command. If an existing key is assigned you will be asked if you wish to delete it and replace with the new assignment.

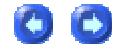
To remove a key assignment:

- 1) Select the command you wish to modify from the Commands list.
- 2) Select the existing key assignment from the Existing keys list.
- 3) Click on the Remove button and the key assignment will be removed.

To reset the key assignments to the default:

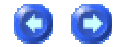
- 1) Click on the Defaults button and the key assignments will be reset to the defaults. The users will be prompted to confirm the action.

Ignore Blank Lines (Options menu)



This item may be selected to allow the active compare to ignore lines that only include line terminators (as appropriate to the active file type) when determining differences between the active files. This does not include lines that contain tabs or spaces (whitespace).

Ignore Whitespace (Options menu)



This item may be selected to allow the active compare to ignore tabs and spaces when comparing files for differences.

Ignore Case (Options menu)



This item may be selected to allow the active compare to ignore case when comparing files for differences.

Ignore Line Terminators (Options menu)



This item may be selected to allow the active compare to ignore line terminator differences (DOS/UNIX/MAC) when comparing files for differences.

Ignore Options (Configuration)



The **Ignore Options** tab in the Configuration dialog has the following options:

Ignore Blank Lines

This option forces the compare to ignore lines containing only line terminators when comparing the active files

Ignore Case

This option forces the compare to ignore case when identifying differences in the active files

Ignore White Space

This option forces the compare to ignore tabs and spaces when identifying differences in the active files

Ignore Line Terminators

This option forces the compare to ignore line terminator differences (DOS/UNIX/MAC) in the active files

Ignore lines which

This section may be used to define ignore rules based on strings at the beginning or end of lines or to ignore lines containing a specified string.

Ignore a defined number of lines

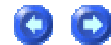
This section allows the user to define a number of lines at the beginning or end of a file to be ignored for compare purposes.

Decimal Offset (Options menu)



This option changes the offset values displayed to the left of the compare panes to be changed from HEX mode to decimal mode.

Create Backup Files (Options menu)



This command may be used to create a backup of the compared files. This is suggested prior to repeated merge commands so that a "baseline" file is maintained to restore if necessary.

Integrate with Explorer (Options menu)



When selected, this command adds UltraCompare options to the context (right-click) menu in Windows Explorer. This is a powerful mechanism for quickly specifying what files/folders to compare and invoke UltraCompare Professional to execute this task

If **Integrate with Explorer** is selected in the Options menu the items below will be added to the context menu for Explorer:



If desired, users may specify what files/folders/zip archives should be loaded for each frame by right-clicking on an item in Explorer and selecting what frame this should load to in the context menu.



Once the desired items are specified, **Run UltraCompare** may be selected to run UltraCompare. Being able to save selections on a frame-by-frame basis allows users to select files/folders for comparison from different folders or drives.



When UltraCompare is launched it will automatically switch to **Text Compare** or **Folder Compare** mode as appropriate. If three items are selected for comparison the appropriate 3-way mode will be launched.

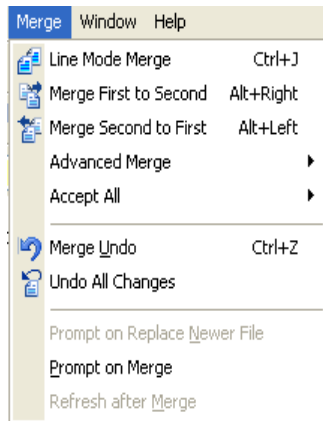


For faster operation, users may hold down the CTRL key and select multiple items from the same directory for comparison and then right-click and select **Run UltraCompare**. UltraCompare Professional will automatically load the selected items into frames for comparison and launch in the appropriate mode.

Merge Menu

Merge Menu

The Merge menu offers the following commands:



<u>Line Mode Merge</u>	switches merge function from block merge to selected line merge
<u>Merge First to Second</u>	merges selection from first to second file
<u>Merge Second to First</u>	merges selection from second to first file
<u>Advanced Merge</u>	merges selection from left to right (or right to left) either above or below the differenced line without overwriting the existing text
<u>Accept All</u>	accepts all merge changes in specified files
<u>Merge Undo</u>	reverses the last merge action
<u>Undo All Changes</u>	reverses all unsaved changes to compared files/folders
<u>Prompt on Replace Newer File</u>	prompts user if merge action will overwrite a file newer than the file being merged
<u>Prompt on Merge</u>	prompts user before each merge is completed
<u>Refresh After Merge</u>	refreshes compare status after each merge is completed

Line Mode Merge (Merge menu)

This command switches the merge function from block merge to selected line merge. If this option is selected users may select individual lines in differenced blocks for merging.

Merge First to Second (Merge menu)

After a line is marked for merge this command may be used to merge the selected line from the file displayed on the left to the file displayed on the right. In 3-Way Text Mode, if the splitter bar between the second and third files is selected, this would become Merge Second to Third.

Merged lines will be indicated with a different background color to facilitate quickly checking all merge changes prior to saving.

Keyboard Shortcut: Alt+Right Arrow

Merge Second to First (Merge menu)

..

After a line is marked for merge this command may be used to merge the selected line from the file displayed on the right to the file displayed on the left. In 3-Way Text Mode, if the splitter bar between the second and third files is selected, this would become Merge Third to Second.

Merged lines will be indicated with a different background color to facilitate quickly checking all merge changes prior to saving.

Keyboard Shortcut: Alt+Left Arrow

Advanced Merge (Merge Menu)

..

These commands may be used to merge differenced blocks from one file to the other without overwriting the existing content of the receiving file. To achieve this the user specifies whether the text to be merged should be merged above or below the existing text.

Merge Undo (Merge menu)

..

This command may be used to reverse the last merge executed.

Keyboard Shortcut: Ctrl+Z

Undo All Changes (Merge menu)

..

This command may be used to reverse all changes in the active files/directories.

Prompt on Replace Newer File (Merge Menu) . .

In Folder Compare mode if a user attempts to merge differenced files from one directory to another and UltraCompare detects that the users action will overwrite a file newer than the one being merged into the receiving directory, a prompt dialog will appear to confirm that this is indeed what the user intends to do.

Prompt on Merge (Merge Menu) . .

This option may be set to cause UltraCompare to prompt the user with each merge to ensure that this is indeed what the user intends to do.

Refresh After Merge (Merge Menu) . .

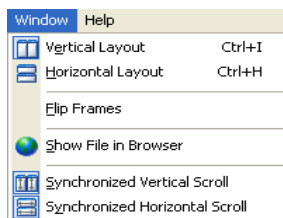
This option only applies in Folder Mode. If selected, this will force a refresh of compared directories (and the status of the compare) whenever a file/folder is merged from one compared folder to the other. If this option is not selected, the automatic refresh/recompare will not occur.

This was originally enabled so that if files/folders should be changed outside of UltraCompare Professional during a compare this would be reflected in the compare status. If it is known that this will not be the case, then it may be preferred not to have this item selected.

Window Menu

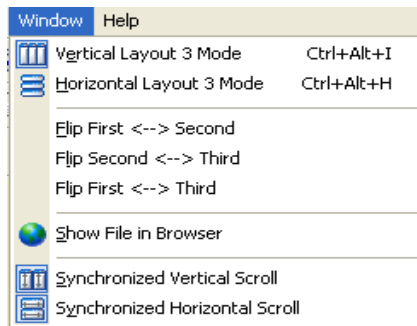
Window Menu . .

The Window menu offers the following commands:



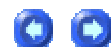
Vertical Layout	displays the compared files side-by-side
Horizontal Layout	displays the compared files with one on above the other
Flip Frames	switches source/destination panes in active compare
Show File in Browser	passes active document to default browser for OS
Synchronized Vertical Scroll	synchronizes the compare panes so that both files may be scrolled vertically at the same time
Synchronized Horizontal Scroll	synchronizes the compare panes so that both files may be scrolled horizontally at the same time

During a 3-Way Text Compare the Window menu offers the following commands:



Vertical Layout 3 Mode	displays the 3 compared files side-by-side
Horizontal Layout 3 Mode	displays the 3 compared files stacked one on top of the other
<u>Flip First <--> Second</u>	switches frames 1 and 2 in the active compare
<u>Flip Second <--> Third</u>	switches frames 2 and 3 in the active compare
<u>Flip First <--> Third</u>	switches frames 1 and 3 in the active compare
Show File in Browser	passes active document to default browser for OS
Synchronized Vertical Scroll	synchronizes the compare panes so that both files may be scrolled vertically at the same time
Synchronized Horizontal Scroll	synchronizes the compare panes so that both files may be scrolled horizontally at the same time

Vertical Layout (Window menu)



This setting causes the compared files to be displayed side-by-side and is the default display option.

Keyboard Shortcut: Ctrl+I

3-Way Keyboard Shortcut: Ctrl+Alt+I

Horizontal Layout (Window menu)

This option causes the compared files to be displayed with one file above the other.

Keyboard Shortcut: Ctrl+H

3-Way Keyboard Shortcut: Ctrl+Alt+H

Flip Frames (Window menu)

This option will cause the file displayed in the Source (left) pane to be displayed in the Destination (right) pane and vice versa. For presentation purposes users may choose to switch the initial presentation of the compared files.

If a 3-Way Text Compare is active, users will be presented with three options to switch the files represented in specified frames: Flip Frames First <--> Second, Flip Second <--> Third, and Flip First <--> Third.

Synchronized Vertical/Horizontal Scroll (Window menu)

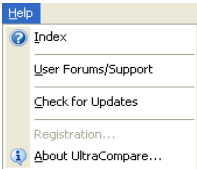
This option synchronizes the compare panes so that both files may be scrolled vertically/horizontally at the same time by scrolling in either pane. The default is for both panes to be in sync. This command is used to re-establish synchronization if it is lost through a merge or other function.

Help Menu

Help Menu

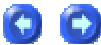
..

The Help menu offers the following commands:



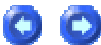
Index	presents index for Help files
User Forums/Support	links to online user discussion forum
Check for Updates	checks to see if an upgrade/hotfix is available for the version currently being used
Registration	presents dialog for entry of product registration information
About UltraCompare	indicates version being run

Index (Help menu)



Selecting this option causes the index for the Help files to be displayed.

Registration



This option presents the Registration dialog where the user name and registration code is entered to register the product. These are obtained by ordering a paid license from IDM Computer Solutions, Inc. or an authorized distributor/reseller.

About UltraCompare (Help menu)



















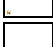






..

This command presents the About dialog which shows what version is being run and also indicates whether or not the product is currently registered. If the product is registered the name in which the product is registered will be indicated here.

Toolbar Summary






Main Toolbar

The Main toolbar includes the following functions:

	Save Result	saves the result summary of the active compare as a text file
	Close All Files	closes all open files
	Print	prints the result summary
	Print Preview	displays the result summary onscreen as it would appear printed
	All	displays the entire contents of both compared files
	Just Differences	displays only the lines with differences
	Just Matching	displays only the lines that are an exact match
	Text Modes	displays submenu where user may select Text Mode or 3-Way Text Mode display options
	Binary Modes	displays submenu where user may select Binary (fast) Mode or Binary (smart) Mode display options
	Folder Modes	displays submenu where user may select Folder Mode or 3-Way Folder Mode display options
	Vertical Layout	displays the compared files side-by-side
	Horizontal Layout	displays the compared files with one on above the other
	Configuration	presents configuration dialog
	Show Line Numbers	displays line numbers in the compared files
	Execute Profile	presents User Profiles dialog where user may select a compare profile
	Synchronize	scrolls both windows together
	View Next Difference	repositions to the next difference in the compared files
	View Prev Difference	repositions to the previous difference in the compared files
	Parent Directory	resets both panes of directory compare to parent directory
	Recursive Compare	compares all subdirectories of folders specified for compare rather than just the top level directory
	Edit in UltraEdit	opens active file for editing in UltraEdit
	Stop Comparing and Exit	stops active compare and closes program
	Show File in Browser	passes active document to default browser for OS
	About	displays About dialog
	Refresh	repeats compare to refresh differences indicated

Path Toolbar Commands

The following commands are available in the File/Folder Path toolbar:

	Path Combo Box	used for entry/selection of path to file/folder for compare
	Folder Parent	shifts active pane up to parent folder in folder compare
	Open File/Folder	opens specified file/folder in active pane
	Close File/Folder	closes active file/folder
	Encoding	presents context menu allowing encoding selection for active file in text compare (see below)

When the Encoding button is pressed in the Path toolbar the user may specify the encoding to be used for comparing the active file in text compare mode.



Edit in UltraEdit



This command opens the files currently active in a Text Compare in UltraEdit for editing.

Opening and Comparing Files

Opening Files

There are many methods for opening files to be compared in UltraCompare. The method chosen really is a matter of preference as all the methods described below will result in the same internal function - namely opening the specified files and automatically beginning a comparison of the specified files.

UltraEdit-32

If you are running UltraCompare Lite you must have UltraEdit-32 running in order to compare files in UltraCompare Lite. If you wish you may open the files to be compared in UltraEdit-32 and invoke UltraCompare Lite using the Compare Files command in the File menu. By default the last two files opened/edited would populate the comboboxes in the Compare Files dialog. If you prefer, you may simply use this dialog's Browse buttons to browse to and specify the files you'd like to compare.

Along with specifying files to be opened in UltraCompare Lite, you may select whether the specified files should be compared as Text or Binary files as well as specifying any (or all) of the three compare options in this dialog as well:

Ignore Case

Ignore Spaces

Ignore Blank Lines

Please note that these options only apply to Text Compares.

Command Line

If you are running UltraCompare Professional you may specify files to be opened and compared from the command line. If UltraCompare has been added to your PATH it may be invoked from the command line (i.e. a DOS prompt) for comparing files as follows:

```
uc c:\temp\test.txt d:\temp\test.txt
```

This would cause UltraCompare to open test.txt from the two different drives in the left and right panes and automatically begin comparing them. While the compare is in progress the Cancel button on the toolbar will be active. The status bar will show a yellow light and the "Processing" label.

UltraCompare Help

If UltraCompare has NOT been added to your PATH you would need to reference the full path to the application in order to invoke it from the command line, i.e.:

```
"c:\program files\ultracompare\uc" c:\temp\test.txt d:\temp\test.txt
```

There are several command line options that may be used when invoking UltraCompare Professional from the command line.

Open Left/Right

UltraCompare Professional also includes Open Left and Open Right commands in the File menu. Selecting either of these will open a standard file open dialog which you may use to browse to and select the file you'd like to be opened in the specified compare pane.

Combobox/Text Entry

If you prefer you may type directly in the combobox above each compare pane to specify the file to be opened in the pane below. When files have been specified for each pane pressing the Enter/Return key will begin the file compare. The paths for files which have previously been compared are stored in the comboboxes and you may click on the down arrow and select from previous files for comparison if you wish.

Browse Button

Finally, you may click on the browse button in the upper right corner of either pane to open a standard file open dialog and select the file you wish to open using this.

Once both files are opened UltraCompare will automatically begin comparing their contents and when this is completed the file compare results will be indicated with a combination of colors and symbols.

Text Compare

When the Text Compare is completed the result of the compare will be indicated in the application using a combination of symbols and colors.

<!	indicates that data is in the left file but not the right file
!>	indicates that data is in the right file but not the left file
*	indicates that data is different between the compared files on the indicated line

Along with the items above, lines detected as being different will be highlighted with the color specified for the Difference Background in the Colors dialog (by default a violet color) in the Options menu. The active line is indicated with the color specified for the Navigation Background (by default a peach color).

The status bar will also indicate the number of blocks and lines containing differences in the compared files. For example:

38 block(s) diff 156:204 line(s) diff

would indicate that there are 38 blocks where differences have been detected between the compared files and that the Source (left) file contains 156 lines of text in these differenced blocks and the Destination (right) file contains 204 lines in these differenced blocks.

If Differences in context result is selected in the **Backup & Save** pane in **Configuration** the following symbols will be used:

+++	identifies the file in the first pane
---	identifies the file in the second pane
+	indicates that text is from the file in the first pane
-	indicates that text is from the file in the second pane

@ @ +1201,4 -1204,4 @ @ indicates that the differenced text begins on line 1201 in the first pane and line 1204 in the second pane and the number of lines including differences for this section is 4.

Word Level Selection, Replace and Insertion

During a text compare the user may select words in one compare pane and copy them to the clipboard using the context menu or CTRL+C. After clicking in the other compare pane, the user may insert the contents of the clipboard or overwrite a specific word by pasting using the context menu or CTRL+V.

3-Way Text Compare



When the 3-Way Text Compare is completed the result of the compare will be indicated in the application using a combination of symbols and colors.

<! indicates that data is in the left file but not the right file

!> indicates that data is in the right file but not the left file

!! indicates that this section contains empty lines in both files

* indicates that data is different between the compared files on the indicated line.

Along with the items above, lines detected as being different will be highlighted with the color specified for the Difference Background in the Colors dialog (by default a violet color) in the Options menu. The active line is indicated with the color specified for the Navigation Background (by default a peach color). If Mark empty lines is selected in the Colors dialog, empty sections (containing no data and no hard returns) will be indicated in the scaled/scrollable map with vertical blue bars on a white background.

Where it is observed that lines in Frame 2 are highlighted with a blue block fading to white toward one of the files being compared, this means that the block in Frame 2 matches the same block in Frame 1 but is different from the same block in Frame 3 (or vice-versa).

The status bar will also indicate the number of blocks and lines containing differences in the pair of files selected for comparison. For example:

Pair [2-3] - 33 Block(s) diff 286 : 395 Line(s) diff

would indicate that the active pair of files (of the three files open for comparison) is Frame 2 and Frame 3 and that there are 33 blocks where differences have been detected between the compared files and that the file in Frame 2 contains 286 lines of text in these differenced blocks and the file in Frame 3 contains 395 lines in these differenced blocks.

Printed Result Summary



The result summary is the text output of the active compare. It uses the following symbols:

Text Compare

<!	data is in the left file but not in the right file
!>	data is in the right file but not in the left file
*	data is different between the compared files on this line

Folder Compare

_x	file is in directory on left (Source) but not directory on right (Destination)
x_	file is in directory on right (Destination) but not directory on left (Source)

Delete File From Disk



This is a context menu option available while comparing two files. If you right-click within the pane for either compared file the context menu appears with this option. Selecting this option will cause a prompt to appear showing the full path of the active file to confirm that you do wish to delete the active file. If "yes" is selected the file will be deleted and will be removed from the active compare pane. If "no" is selected the prompt dialog is dismissed and focus returns to the active document pane.

Opening and Comparing Folders

Opening Folders



Directories/folders you wish to open and compare in UltraCompare must be specified on the command line as follows:

```
uc -d c:\temp\test c:\temp\test1
```

The -d flag indicates that directories/folders, and not files, should be opened for comparison.

If UltraCompare has NOT been added to your PATH you would need to reference the full path to the application in order to invoke it from the command line, i.e.:

```
"c:\program files\ultracompare\uc" -d c:\temp\test c:\temp\test1
```

Please note that only UltraCompare Pro supports Command Line Options. UltraCompare Lite does not support opening/comparing directories/folders.

Folder Compare



If you're using UltraCompare Professional, directories/folders to be compared may be opened from the command line with the following syntax:

```
uc -d c:\temp d:\temp
```

Please note: If UltraCompare is not in your PATH you would need to reference the full path to UltraCompare for this to work.

While UltraCompare is preparing the directory structure for display the Cancel button on the toolbar will be active and colored and may be pressed to cancel the compare. During this time the middle (yellow) light on the status bar will be highlighted and the label "Progress" will be shown to indicate that UltraCompare is working. When the directory structure is ready for display either the red light and the label "Different" will be displayed or the green light and the label "Matching" will be displayed. (This feature is only available in UltraCompare Pro and not the Lite version.)

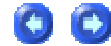
A .zip archive may be selected for comparison against a folder on the file system, if desired. Both recursive and non-recursive compares against .zip archives are supported.

If the recursive compare option is not selected then the Status column in the compare will indicate if listed subdirectories are in both directories or if they're only in the source or destination directories. If the recursive compare option is selected then the Status column will indicate whether subdirectories are identical or different or if they only exist in one of the parent directories.

If UltraCompare Professional is already running in Text Compare mode you may go to the View menu and select Directory mode to switch to the folder compare interface. Any files currently open in Text/Binary compare mode will not be remembered should you switch back from Directory mode.

If desired, the user may select files with different names and launch a Text Compare. To do this, right click on a file referenced in the Folder Compare and select **Load First File** (or second, or third) from the context menu and specify the frame the selected file should be loaded to. After specifying the other file(s) to be compared, double-clicking on the last file specified will launch a Text Compare with the specified files.

Folder Compare Elements



After UltraCompare has completed comparison of the specified directories the results are presented in the main window. The categories in which differences are specified are as follows:

File Name

The contents of the compare directories are arranged according to the names of the files in the directories that are being compared. This should be a complete listing of the combined contents of both directories.

Status

The Status field identifies what differences have been found between the compared directories. Possible values here are:

Identical: indicates that the contents of the file are exactly the same in both directories.

Same Time, Content Diff: indicates that the time stamp for both files is the same, but there are content differences between the compared files.

Source Newer: indicates that the directory specified on the left contains a newer copy of the file being compared.

Destination Newer: indicates that the directory specified on the right contains a newer copy of the file being compared.

Source Only: indicates that the file only exists in the directory on the left.

Destination Only: indicates that the file only exists in the directory on the right.

Src Date

The Src Date field shows the date and time stamp of the files in the directory specified on the left.

Src Size

The Src Size field shows the size in bytes of the files in the directory specified on the left.

Dest Date

The Dest Date field shows the date and time stamp of the files in the directory specified on the right.

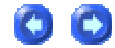
Dest Size

The Dest Size field shows the size in bytes of the files in the directory specified on the right.

File Type

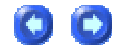
The File Type field indicates whether a file has been identified as being in Text or Binary format. If a subdirectory is listed this field will label this as a Directory rather than using one of the file types

Parent Directory



This option resets both directories being compared to their parent directory. This can be useful when a recursive compare is being done. If the user double-clicks on a subdirectory to see differences here, the Parent Directory button may be used to return to the previously compared parent directories.

Recursive Folder Compare



When comparing two directories you can press the Recursive Compare button in the toolbar. This will cause the selected directories to be compared a second time so that more information is provided regarding subdirectories found in the specified directories.

With the recursive option, the Status column will indicate the following regarding listed subdirectories:

Identical: indicates that the contents of this subdirectory are the same between both parent directories

Different: indicates there are differences between the contents of this subdirectory in the parent directories

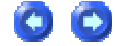
Source Only: indicates that the subdirectory only exists in the Source (left) directory

Destination Only: indicates that the subdirectory only exists in the Destination (right) directory

If you wish, you may double click on a subdirectory folder. This will open the selected subdirectory in both parent directories for compare. You may press the Parent Directory button to navigate up one level through the directory structure.

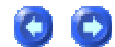
FAQ

Why can't I compare folders?



If you're running UltraCompare Lite and you attempt to compare two folders from the command line you will see two separate dialogs in succession indicating that the directories specified are not files. The Lite version doesn't support directory/folder comparison and this error message is displayed as a result of this.

Why won't UltraCompare run?



One of the limitations of the UltraCompare Lite as opposed to UltraCompare Pro is that it requires that UltraEdit be running before it can be used. If you try to invoke UltraCompare Lite without UltraEdit running an error message will be presented indicating that UltraEdit must be running before UltraCompare may be used.

Where is the Extensions dialog?



UltraCompare Lite doesn't include the Extensions dialog. Since it's not possible to compare directories/folders in the Lite version there is no need to be able to define which file types are interpreted as text files (as opposed to binary files) by default.

Sales and Support

Sales

You may place an order for UltraCompare on our site at:

<https://www.ultraedit.com/store/customer/home.php?cat=268>

or you may contact us using the following numbers:

Telephone: (513) 892-8600

Fax: (513) 892-4915

Orders may also be mailed to us at:

IDM Computer Solutions, Inc.

5559 Eureka Dr., Suite B

Hamilton, OH 45011

If you have questions regarding pricing or licensing options please contact us
at: sales@idmcomp.com

Technical Support

You can obtain free support for UltraCompare if you've registered and paid for a license.

UltraCompare Help

Free Email Support

For free technical support please email any questions/suggestions to support@idmcomp.com.

Free User-to-User Support Forum

Users may exchange tips and observations in the UltraCompare User's Forum on our site. This is not intended as a replacement for technical support, but many times users can help each other and this can be useful in creating a community of users.

License Agreement

License Agreement - Registered



This is a legal agreement between you (either an individual or an entity) and IDM Computer Solutions, Inc. By opening the sealed software packages (if appropriate) and/or by using the SOFTWARE, you agree to be bound by the terms of this Agreement.

SOFTWARE LICENSE

1. **GRANT OF LICENSE.** This License Agreement (License) permits you to use a single copy, or multiples copies if you are the only user of the software product identified above, which may include user documentation provided in on-line or electronic form (SOFTWARE). The SOFTWARE is licensed as a single product, to an individual user, or group of users for Multiple User Licenses and Site Licenses. This Agreement requires that each user of the SOFTWARE be Licensed, either individually, or as part of a group. A Multi-User License provides for a specified number of users to use this SOFTWARE at any time. This does not provide for concurrent user Licensing. Each user of this SOFTWARE must be covered either individually, or as part of a group Multi-User License. The SOFTWARE is in use on a computer when it is loaded into the temporary memory (i.e. RAM) or installed into the permanent memory (e.g. hard disk) of that computer. This software may be installed on a network provided that appropriate restrictions are in place limiting the use to registered users only.

2. **COPYRIGHT.** All physical copies of the software are the property of the registered user(s) but use of the software is restricted according to the terms as specified above (GRANT OF LICENSE). The SOFTWARE is protected by United States Of America copyright laws and international treaty provisions. All Intellectual Property Rights (IPR) remain the property of IDM Computer Solutions, Inc. You may not copy the printed materials accompanying the SOFTWARE (if any), nor print copies of any user documentation provided in on-line or electronic form unless for the specific use of a legally registered user as specified above (GRANT OF LICENSE). You must not redistribute the registration codes provided, either on paper, electronically, or any other form.

3. **OTHER RESTRICTIONS.** The registration notification provided, showing your authorization code and this License is your proof of license to exercise the rights granted herein and must be retained by you. You may not rent or lease the SOFTWARE, but you may transfer your rights under this License on a permanent basis, provided you transfer this License, the SOFTWARE and all accompanying printed materials, retain no copies, and the recipient agrees to the terms of this License. You may not reverse engineer, decompile, or disassemble the SOFTWARE, except to the extent the foregoing restriction is expressly prohibited by applicable law.

LIMITED WARRANTY

LIMITED WARRANTY. IDM Computer Solutions, Inc. warrants that the SOFTWARE will perform substantially in accordance with the accompanying printed material (if any) and on-line documentation for a period of 365 days from the date of receipt.

CUSTOMER REMEDIES. IDM Computer Solutions, Inc. entire liability and your exclusive remedy shall be, at IDM Computer Solutions, Inc. option, either (a) return of the price paid or (b) repair or replacement of the SOFTWARE that does not meet this Limited Warranty and that is returned to IDM Computer Solutions, Inc. with a copy of your receipt. This Limited Warranty is void if failure of the SOFTWARE has resulted from accident, abuse, or misapplication. Any replacement SOFTWARE will be warranted for the remainder of the original warranty period or thirty (30) days, whichever is longer.

NO OTHER WARRANTIES. To the maximum extent permitted by applicable law, IDM Computer Solutions, Inc. disclaims all other warranties, either express or implied, including but not limited to implied warranties of merchantability and fitness for a particular purpose, with respect to the SOFTWARE and any accompanying written materials.

NO LIABILITY FOR CONSEQUENTIAL DAMAGES. To the maximum extent permitted by applicable law, in no event shall IDM Computer Solutions, Inc. be liable for any damages whatsoever (including, without limitation, damages for loss of business profits, business interruption, loss of business information, or other pecuniary loss) arising out of the use or inability to use the SOFTWARE, even if IDM Computer Solutions, Inc. has been advised of the possibility of such damages.

Index

3

3-Way Difference Navigation 5

3-Way Folder Mode 25, 26

3-Way Folder Navigation 7

3-Way Text Compare 45

3-Way Text Mode 25, 26

A

About dialog 38

Add Bookmark 19

Advanced Merge 34

All 23

B

Binary 26

Bookmarks 21

C

Center on Difference 23

Color 27

Colors dialog 27

Command Line 43

Command Line Options 10

Compare folders 53

Context Menu Options 11

Create Backup Files 31

Create Backup Zip Archives 26

D

Decimal Offset 31

Delete Bookmark 19

Delete File 47

Delete Selected File 11, 19

Delete Selected Line 11, 19

Difference Navigation 2

Difference Summary 24

Directories/folders 49

DOC Files 25

DOS/UNIX/MAC 30

E

Edit Menu 19

Encoding button 42

Explore Current Folder 11

Extensions dialog 53

F

Favorite Files/Directories list 18

Favorites 18

File menu 15

File Open dialog 17

Find 21

Flip Frames 37

Folder Compare 49

Folder Compare Elements 50

Folder Mode 26

Font 28

G

Go To Line Number 21

H

Help Menu 37

HEX 31

Hide Main Window While Progress
Runs 26

Horizontal Layout 37

I

Ignore Blank Lines 30

Ignore Case 30

Ignore Line Terminators 30

Ignore Options 30

Ignore Options dialog 26

Ignore Whitespace 30

Index 38

J

Just Differences 23

Just Matching 23

K

Key Mapping dialog 26, 29

L

License Agreement 57

Line Mode Merge 33

M

Main Toolbar 41

Merge First 33

Merge Menu 32

Merge Second 33

Merge Second to First 34

Merge Undo 34

Microsoft Word 25

N

Next Difference 20

O

Open First/Second/Third 17

Opening 43

Opening/comparing
directories/folders 49

P

Parent Directory 51

PATH 43

Path Toolbar Commands 42

Prev Difference 21

Preview First/Second/Third 19

Print 19

Print dialog 19

Print First/Second/Third 19

Print Preview 18

Printed Result Summary 46

Prompt on Merge 35

Prompt on Replace Newer File 34

R

Recursive Compare 2

Recursive Folder Compare 52

Refresh 24

Refresh After Merge 35

Registering 1

Registration 38

Rich Text Format 25

RTF Files 25

S

Sales 55

Save As dialog 18

Save Merged Changes 18

Save Result 18

Scaled/scrollable 45

Scaled/Scrollable Map 22

select words 44

Set Filter 28

Set Filter dialog 26

Set Font dialog 26, 28

Show Additional Frames 22

Show Line Numbers 24

Show Merge Buttons on Splitter 22

Show Spaces/Tabs 22

Specify Binary Extensions 28

Subdirectories 52

Synchronization 37

Synchronize 24

Synchronized Vertical/Horizontal
Scroll 37

T

Technical Support 55

Text Compare 44

UltraCompare Help

Text Mode 25

Toolbar Commands 41

U

UltraCompare Lite 13

UltraCompare Pro 13

UltraCompare Versions 13

Undo All Changes 34

User Forums/Support 37

V

Vertical Layout 36

View Menu 22

W

Why won't UltraCompare run 53

Window menu 35

Windows Explorer 31

Word documents 25

Word Level Selection 44